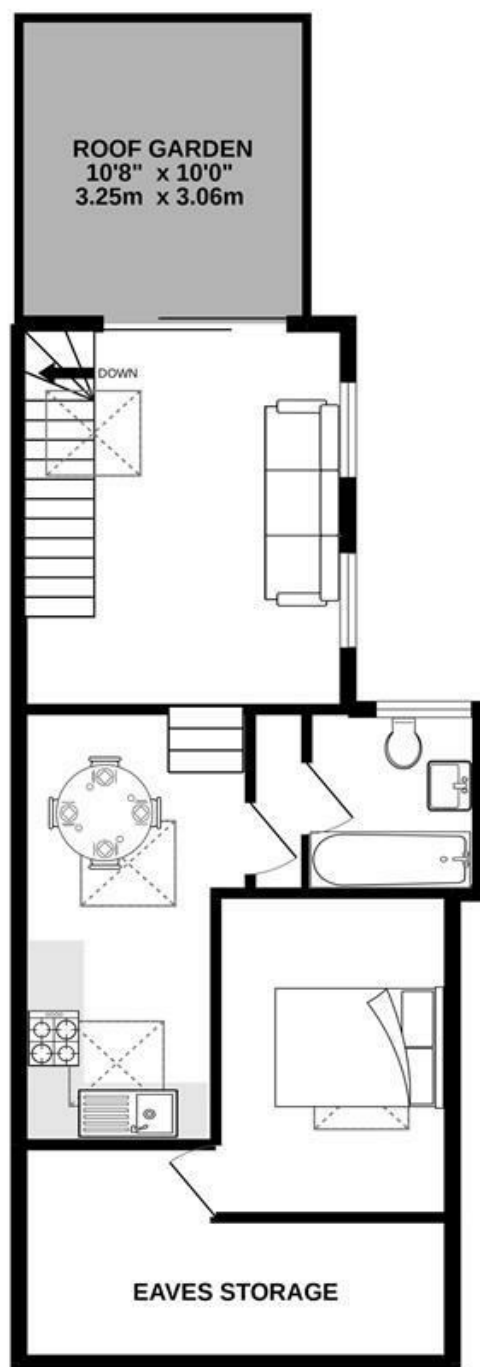


1ST FLOOR
28 sq.m. (116 sq.ft.) approx.



2ND FLOOR
506 sq.m. (1963 sq.ft.) approx.



TOTAL FLOOR AREA : 533 sq.ft. (49.5 sq.m.) approx.

Whilst every attempt has been made to ensure the accuracy of the floorplan contained here, measurements of doors, windows, rooms and any other items are approximate and no responsibility is taken for any error, omission or mis-statement. This plan is for illustrative purposes only and should be used as such by any prospective purchaser. The services, systems and appliances shown have not been tested and no guarantee as to their operability or efficiency can be given.
Made with Metropix ©2022.

Energy Efficiency Rating		Current	Potential
Very energy efficient - lower running costs			
(92 plus) A			
(81-91) B			
(69-80) C		74	74
(55-68) D			
(39-54) E			
(21-38) F			
(1-20) G			
Not energy efficient - higher running costs			
England & Wales		EU Directive 2002/91/EC	



Bickley Street
London

Asking Price
£424,950

Absolute Living are delighted to bring to the market this spacious and bright one bedroom flat on the upper floors of this period property on a prime road close to Tooting Broadway with a private roof terrace.

This property has been finished to a very high standard throughout. It comprises, large bedroom, modern bathroom, a bright fully integrated modern kitchen, open plan reception opening on to a private suntrap terrace. It would make a lovely home for a couple or individual or a great rental investment.

Located on a quiet residential street yet still in the very heart of the thriving Tooting scene, this period flat is only a 2 minute walk from Tooting Broadway Tube Station (Northern Line) and the same from the large supermarket. Early viewings are highly recommended. New long lease. Call today to arrange a viewing. Please note the seller has an interest in Absolute Living

Restways
High Street
Gillingham
Dorset
SP8 4AA

t. 01747 824 547
gillingham@mortonnew.co.uk
www.mortonnew.co.uk



DISCLAIMER: These particulars, whilst believed to be accurate are set out as a general outline only for guidance and do not constitute any part of an offer or contract. Intending purchasers should not rely on them as statements or representation of fact, but must satisfy themselves by inspection or otherwise as to their accuracy. We have not carried out a detailed survey nor tested the services, appliances and specific fittings. Room sizes should not be relied upon for carpets and furnishings. The measurements given are approximate. No person in this firm's employment has the authority to make or give any representation or warranty in respect of the property.