



26 Edgeware Road

Chadderton, Oldham, OL9 9PU

£249,950

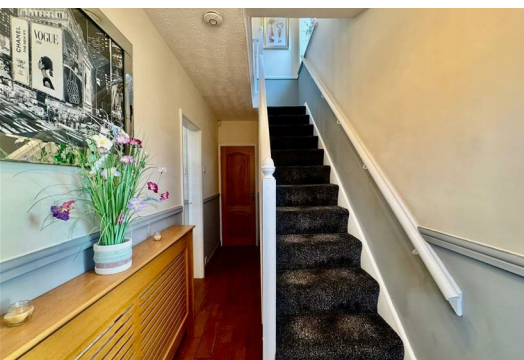


*****IMMACULATE***** Cousins Estate Agents are delighted to present this THREE BEDROOM SEMI DETACHED situated in the popular area south Chadderton .

A Generously Extended Three-Bedroom Semi-Detached Home – Ideal for Growing Families This generously extended three-bedroom semi-detached property is situated on Edgeware Road in the popular area of South Chadderton and offers spacious, versatile living ideal for both first-time buyers and growing families.

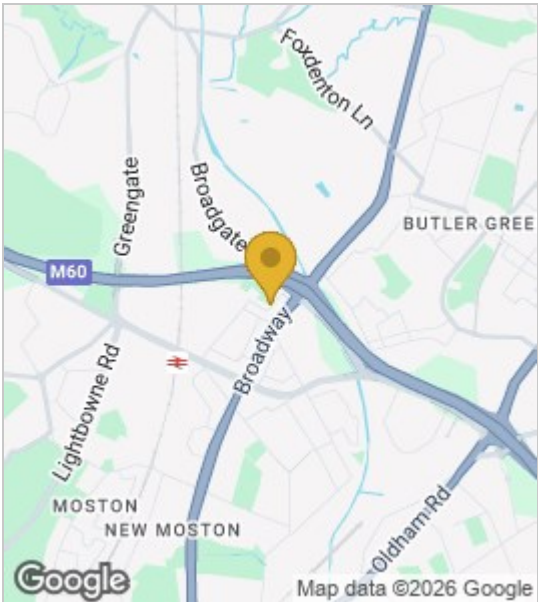
The home benefits from a substantial ground floor extension, significantly enhancing the living accommodation and creating a flexible open-plan layout perfect for modern family life. Externally, the property enjoys the added convenience of driveway parking to the front, while to the rear is a low-maintenance garden—ideal for busy professionals and families alike.

Internally, the ground floor comprises a welcoming entrance hallway leading to a spacious open-plan living area incorporating the lounge, dining space and kitchen. A useful



- Living room
- Dinning room / kitchen
- co
- Bedroom 1
- Bedroom 2
- Bedroom 3
- Shower room

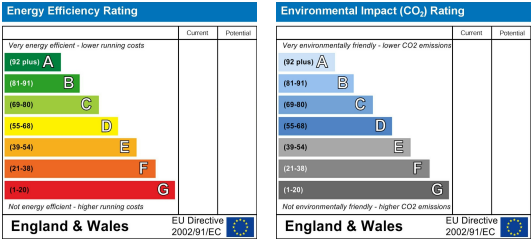
Area Map



Floor Plans



Energy Efficiency Graph



These particulars, whilst believed to be accurate are set out as a general outline only for guidance and do not constitute any part of an offer or contract. Intending purchasers should not rely on them as statements of representation of fact, but must satisfy themselves by inspection or otherwise as to their accuracy. No person in this firms employment has the authority to make or give any representation or warranty in respect of the property.

