



131 Droylsden Road , Manchester, M40 1NT

£240,000



Cousins are please to bring to the market Stunning Three-Bedroom Mid-Terrace with Front & Rear Gardens

This exceptional three-bedroom mid-terrace, located on Droylsden Road in Newton Heath, is just a few miles from Manchester city centre and is perfect for both first-time buyers and families.

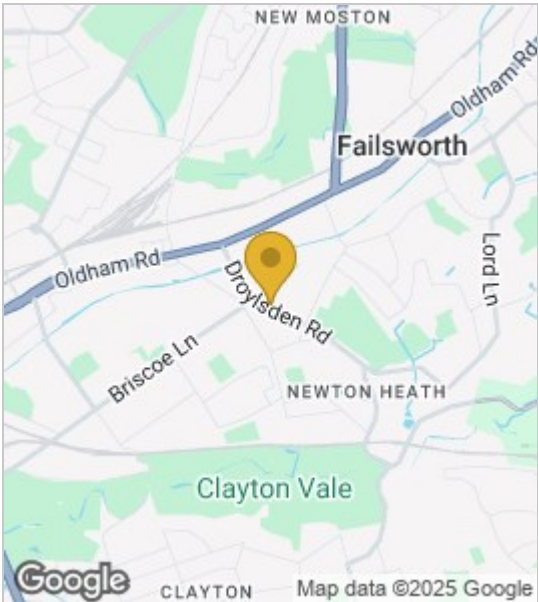
Boasting instant kerb appeal with its smart front garden, the property offers a stylish and contemporary interior that has been thoughtfully upgraded to provide a modern, move-in-ready home.

On the ground floor, you are welcomed by a bright entrance hallway leading into a spacious lounge, complete with a charming bay window. To the rear, there a second 2nd reception and dinning room , which creates a light and airy space, featuring a modern kitchen to the rear with ample worktop and cupboard storage, integrated appliances, and

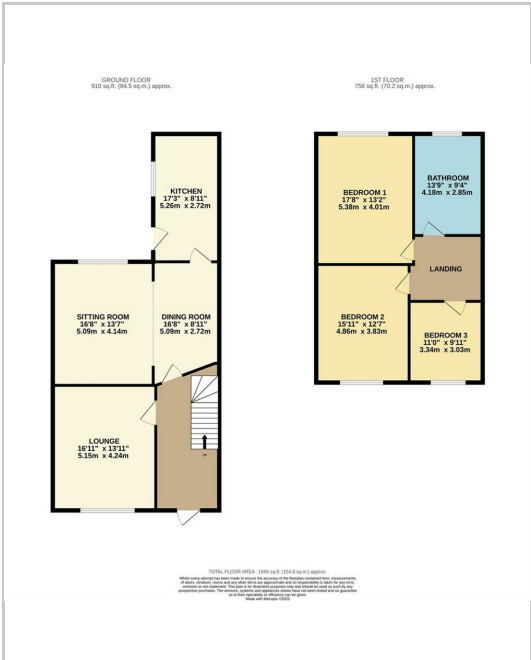


- living room
- Dinning room
- second Reception room
- Kitchen
- Bedroom 1
- Bedroom 2
- Bedroom 3
- Family Bathroom

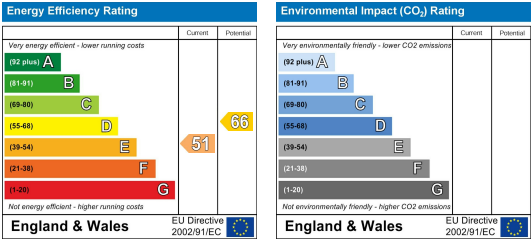
Area Map



Floor Plans



Energy Efficiency Graph



These particulars, whilst believed to be accurate are set out as a general outline only for guidance and do not constitute any part of an offer or contract. Intending purchasers should not rely on them as statements of representation of fact, but must satisfy themselves by inspection or otherwise as to their accuracy. No person in this firms employment has the authority to make or give any representation or warranty in respect of the property.

