



## 62 Dob Brook Close

, Manchester, M40 1DB

**Asking Price £200,000**

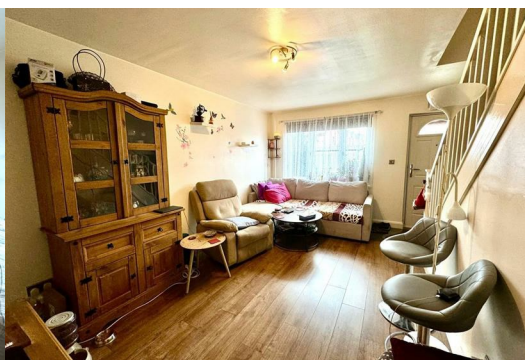


Charming Two-Bedroom Townhouse in Dob Brook Close, Manchester

Located in the sought-after and tranquil Dob Brook Close, this delightful two-bedroom terrace offers a fantastic opportunity for first-time buyers, young families, or anyone looking for a comfortable and versatile home.

Step inside to discover a well-proportioned layout, featuring a spacious and welcoming reception room—perfect for relaxing evenings or entertaining guests. The thoughtfully designed interior continues with two generously sized bedrooms, offering plenty of space for rest, study, or personalisation.

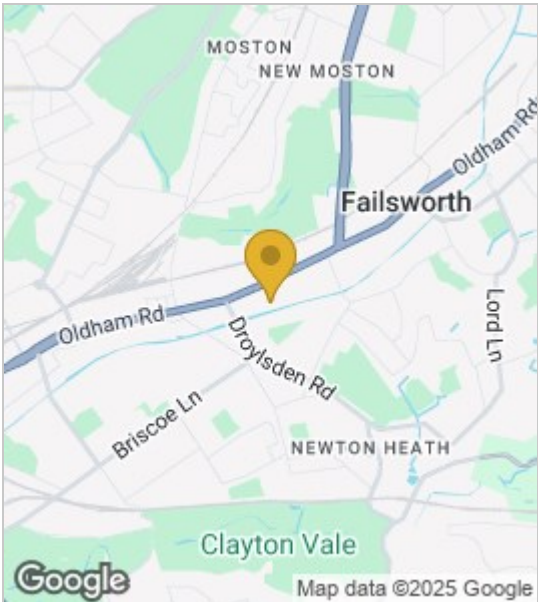
A conveniently located bathroom ensures practicality for daily living, while the real highlight lies outdoors: a separate office or summer house presents a flexible space, ideal for remote work, creative pursuits, or unwinding in peace.



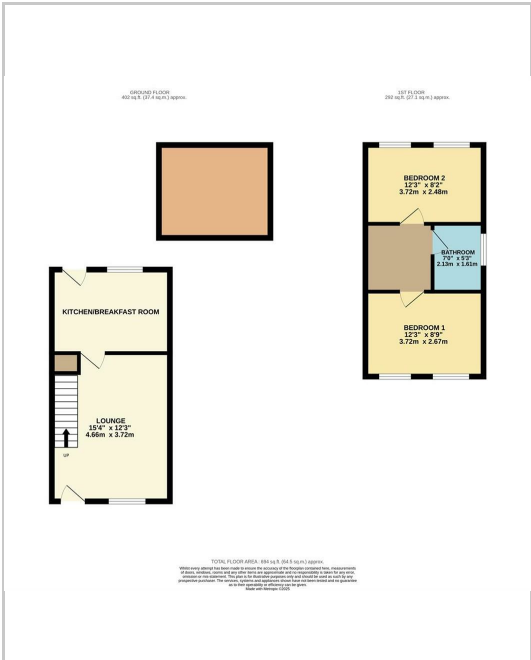


- LOUNGE
- KITCHEN
- BEDROOM ONE
- BEDROOM TWO
- BATHROOM
- SUMMER HOUSE

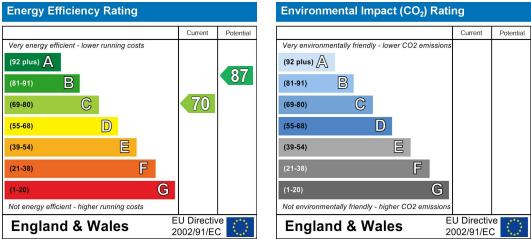
Area Map



Floor Plans



Energy Efficiency Graph



These particulars, whilst believed to be accurate are set out as a general outline only for guidance and do not constitute any part of an offer or contract. Intending purchasers should not rely on them as statements of representation of fact, but must satisfy themselves by inspection or otherwise as to their accuracy. No person in this firms employment has the authority to make or give any representation or warranty in respect of the property.

