



8 Hawthorns, Arncliffe Rise , Oldham, OL4 2LZ

£1,000



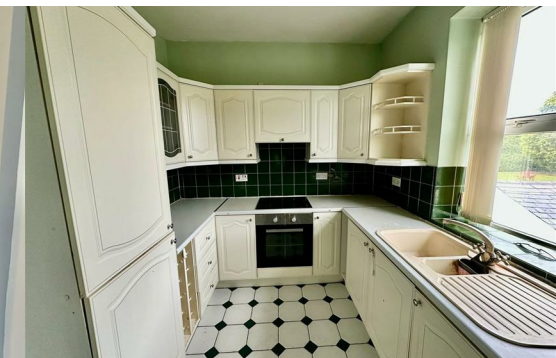
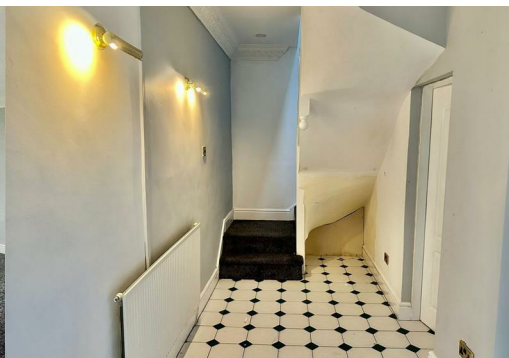
Nestled in the charming area of Arncliffe Rise, Oldham, this delightful two-bedroom apartment offers a perfect blend of comfort and convenience. Upon entering, you will be greeted by a secure entrance, ensuring peace of mind for residents. The apartment features a well-appointed reception room, ideal for relaxation or entertaining guests.

The property boasts one spacious bedroom, providing a tranquil retreat for rest and relaxation. The bathroom is thoughtfully designed, catering to all your daily needs.

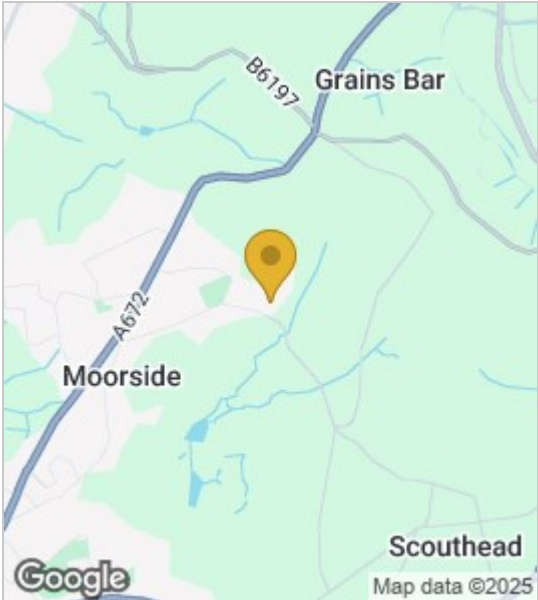
One of the standout features of this apartment is the availability of private parking, a rare find in urban settings, making it an excellent choice for those with vehicles.

This property is perfect for individuals or couples seeking a modern living space in a friendly neighbourhood. With its prime location, you will have easy access to local amenities, parks, and transport links, making it an ideal base for both work and leisure.

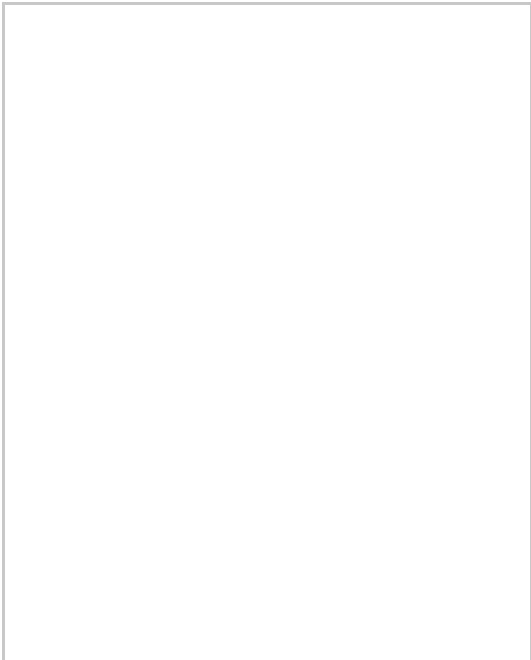
In summary, this two-bedroom apartment on Arncliffe Rise is a wonderful opportunity for anyone looking to enjoy a comfortable lifestyle in Oldham. Don't miss the chance to make this lovely property your new home.



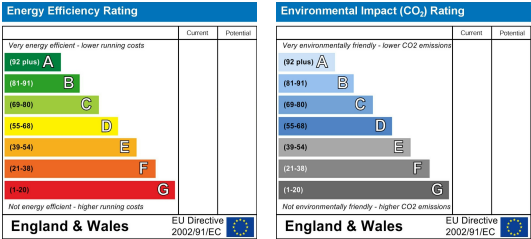
Area Map



Floor Plans



Energy Efficiency Graph



These particulars, whilst believed to be accurate are set out as a general outline only for guidance and do not constitute any part of an offer or contract. Intending purchasers should not rely on them as statements of representation of fact, but must satisfy themselves by inspection or otherwise as to their accuracy. No person in this firms employment has the authority to make or give any representation or warranty in respect of the property.

