



26 Hastings Road

, Prestwich, M25 1PF

Offers Over £300,000

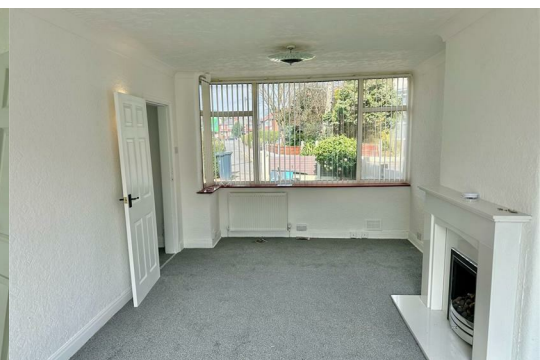
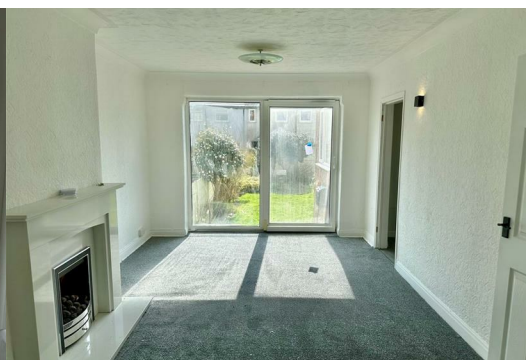


****THREE BEDROOMS****NO CHAIN****RECENTLY REFURBISHED****GARAGE****DRIVEWAY****

Located on Hastings Road, Prestwich, this charming semi-detached property offers a perfect blend of modern living and classic character. Built in 1900, this home has been thoughtfully refurbished throughout, ensuring a fresh and inviting atmosphere for its new occupants.

Spanning an impressive 818 square feet, the property boasts two spacious reception rooms, providing ample space for both relaxation and entertaining. The large lounge is particularly noteworthy, offering a comfortable setting for family gatherings or quiet evenings in. With three well-proportioned bedrooms, this home is ideal for families or those seeking extra space for guests or a home office.

The property features a well-appointed bathroom, ensuring convenience for daily routines. Outside, you will find a generous garden, perfect for enjoying the outdoors, whether it be for gardening, play, or simply unwinding in the fresh air. Additionally, the property includes a garage and a driveway, providing secure parking and extra storage options.

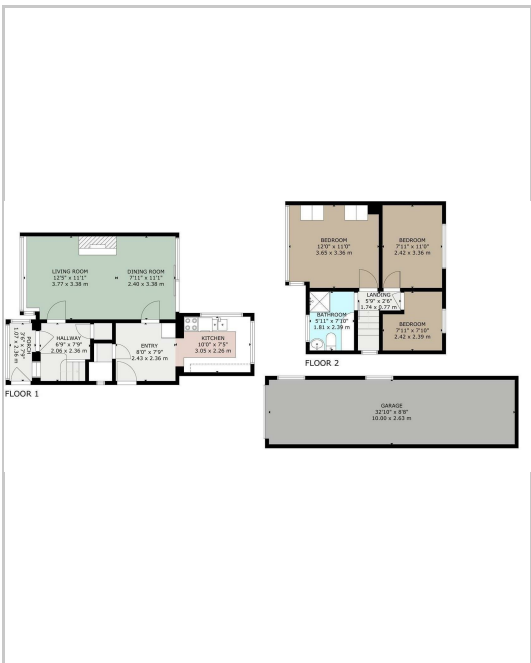


- Lounge
- Kitchen
- Bedroom one
- Bedroom two
- Bedroom three
- Bathroom

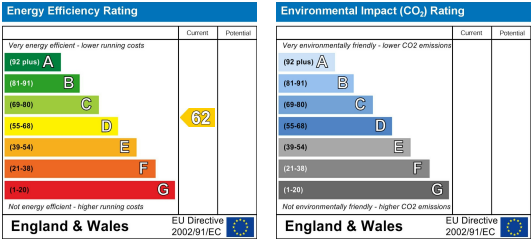
Area Map



Floor Plans



Energy Efficiency Graph



These particulars, whilst believed to be accurate are set out as a general outline only for guidance and do not constitute any part of an offer or contract. Intending purchasers should not rely on them as statements of representation of fact, but must satisfy themselves by inspection or otherwise as to their accuracy. No person in this firms employment has the authority to make or give any representation or warranty in respect of the property.

