



140 Oldham Road

Grasscroft, Oldham, OL4 4HZ

£575,000

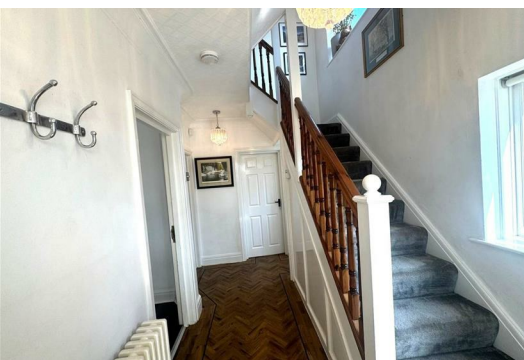


No Chain – Stylish Family Home in Grasscroft

Set within approximately 1/5 of an acre in the sought-after village of Grasscroft, this beautifully presented four-bedroom semi-detached family home offers spacious, stylish living and excellent outdoor space. With secure off-road parking, a garage, and a versatile summerhouse, viewing is highly recommended to fully appreciate what's on offer. EPC Rating: C.

Offering around 1,400 sq. ft. of accommodation, the property is ideally suited to growing families seeking generous indoor and outdoor space. A personal viewing will reveal:

Entrance Porch & Hallway: Welcoming porch leading into a bright hallway with under-stairs storage and Karndean flooring continuing through to the kitchen.
Lounge: Spacious and full of natural light, featuring a large bay window.

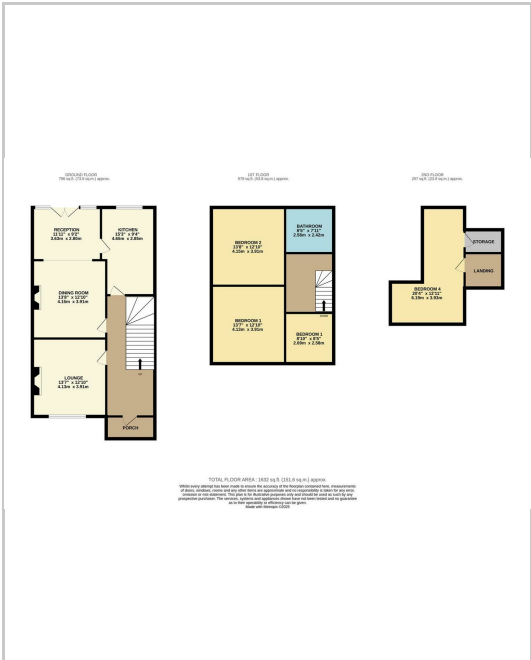


- Living room
- Dining room
- Snug
- Kitchen
- Bedroom 1
- Bedroom 2
- Bedroom 3
- Bedroom 4 attic room
- Family Bathroom
- Summer house

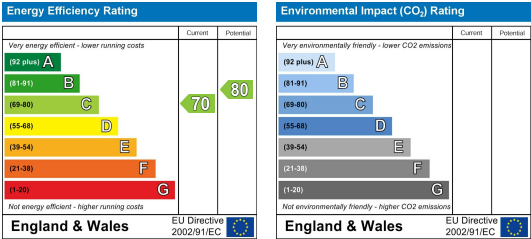
Area Map



Floor Plans



Energy Efficiency Graph



These particulars, whilst believed to be accurate are set out as a general outline only for guidance and do not constitute any part of an offer or contract. Intending purchasers should not rely on them as statements of representation of fact, but must satisfy themselves by inspection or otherwise as to their accuracy. No person in this firms employment has the authority to make or give any representation or warranty in respect of the property.

