



7 Broad Oak Terrace

, Bury, BL9 7ST

Offers Over £170,000

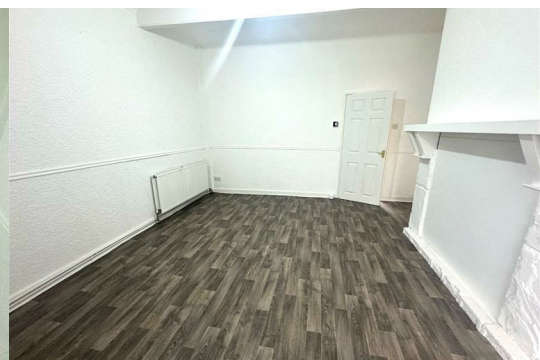


TWO BEDROOMS WELL PRESENTED THROUGHOUT CLOSE TO FAIRFIELD HOSPITAL
CLOSE TO BURY TOWN CENTRE EXCELLENT TRANSPORT LINKS ALLOCATED PARKING

Cousins Estate Agents are pleased to present this well-maintained two-bedroom mid-terrace property for sale, ideally located close to Fairfield General Hospital—making it an excellent choice for healthcare professionals or anyone seeking convenient access to local amenities and transport links.

The property is situated within easy reach of Bury town centre, local shops, schools, and public transport routes, offering both comfort and convenience.

Internally, the layout comprises a modern kitchen, spacious lounge, and a bright conservatory on the ground floor. Stairs from the kitchen lead to the first floor, where you'll find two generously sized double bedrooms and a contemporary family bathroom.



- Lounge - 14'0" x 13'10" (4.28m x 4.23m)
- Conservatory 12'5" x 9'2" (3.80m x 2.8m)
- Kitchen/Diner - 13'10" x 10'6" (4.24m x 3.21m)
- Landing
- Main Bedroom - 4.24m x 3.30m
- Second Bedroom - 13'10" x 7'6" (4.24m x 2.30m)
- Bathroom - 6'4" x 6'2" (1.94m x 1.90m)
- Externally

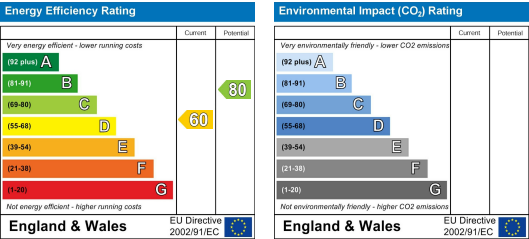
Area Map



Floor Plans



Energy Efficiency Graph



These particulars, whilst believed to be accurate are set out as a general outline only for guidance and do not constitute any part of an offer or contract. Intending purchasers should not rely on them as statements of representation of fact, but must satisfy themselves by inspection or otherwise as to their accuracy. No person in this firms employment has the authority to make or give any representation or warranty in respect of the property.

