



80 Farm Street

Failsworth, Manchester, M35 0JT

Offers Over £210,000



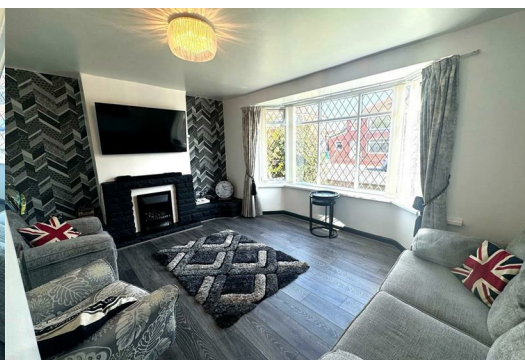
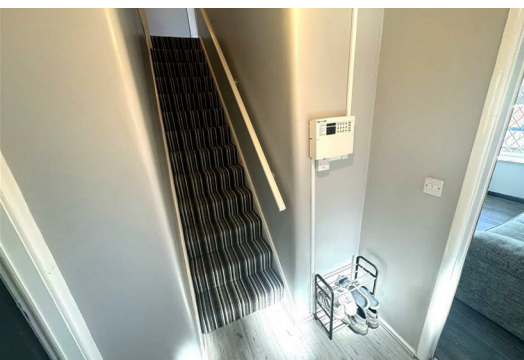
Semi-Detached | Two Double Bedrooms | No Chain | Off-Road Parking

Cousins are delighted to present this charming two-bedroom semi-detached home, ideally located in the popular area of Failsworth, just north of Manchester city centre.

Failsworth is a vibrant and well-connected community, offering a range of local amenities including shops, schools, and excellent public transport links.

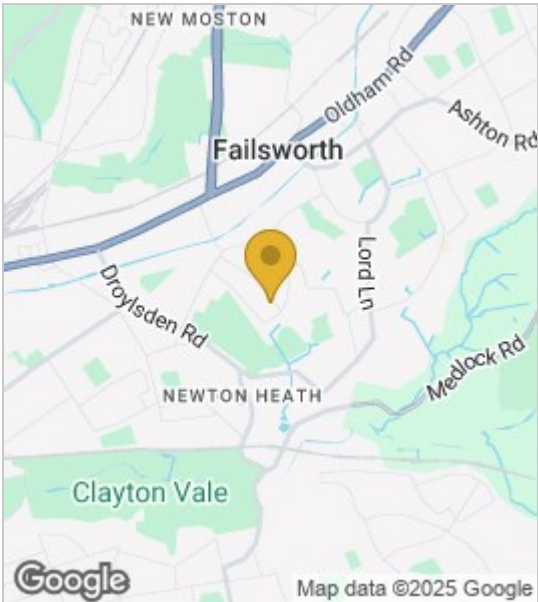
The property itself is well-maintained and provides spacious accommodation throughout. It benefits from uPVC double glazing, gas central heating, and boasts both front and rear gardens. Additional advantages include off-road parking to the side.

Offered with no onward chain, this home is perfect for first-time buyers, downsizers, or investors. Early viewing is highly recommended.



- living Room
- kitchen/ Breakfast room
- Other room
- Bedroom 1
- Bedroom 2
- Family Bathroom

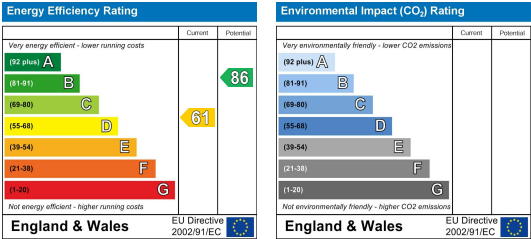
Area Map



Floor Plans



Energy Efficiency Graph



These particulars, whilst believed to be accurate are set out as a general outline only for guidance and do not constitute any part of an offer or contract. Intending purchasers should not rely on them as statements of representation of fact, but must satisfy themselves by inspection or otherwise as to their accuracy. No person in this firms employment has the authority to make or give any representation or warranty in respect of the property.

