



9 Lulworth Crescent

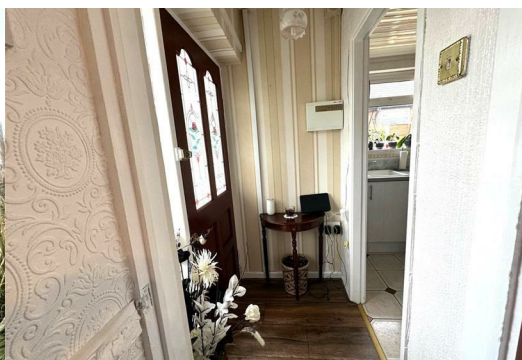
Failsworth, Manchester, M35 9HR

Asking Price £250,000



****CHAIN FREE ** ** TRUE SIZE BUNGALOW **** This semi-detached true bungalow comprises entrance hall, lounge, conservatory, kitchen, 2 bedrooms and shower room. The property benefits from gas central heating and Upvc double glazing. Externally there are good sized gardens to both front and rear along with block paved driveway leading to detached garage.

The property is situated in a popular location, offering easy access to local amenities, schools, and transport links, making it a convenient choice for daily living. The modern design throughout the house creates a fresh and airy feel, allowing natural light to flood the interiors and providing a warm and welcoming environment.



living room

kitchen

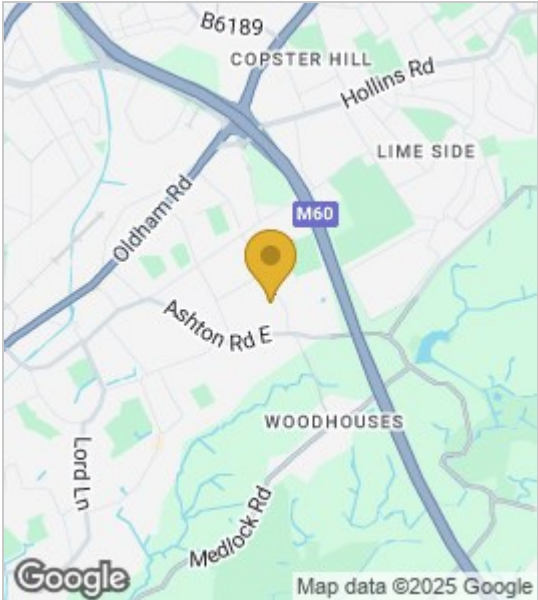
Bedroom 1

Bedroom 2

Shower room

Conservatory

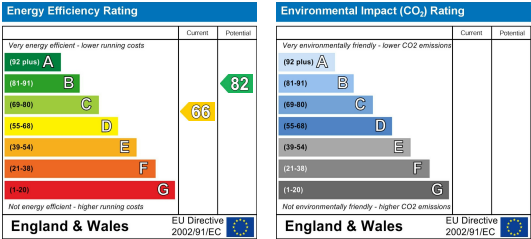
Area Map



Floor Plans



Energy Efficiency Graph



These particulars, whilst believed to be accurate are set out as a general outline only for guidance and do not constitute any part of an offer or contract. Intending purchasers should not rely on them as statements of representation of fact, but must satisfy themselves by inspection or otherwise as to their accuracy. No person in this firms employment has the authority to make or give any representation or warranty in respect of the property.

