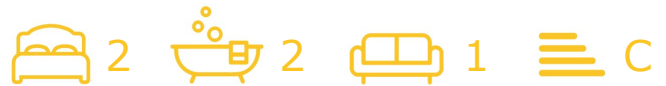




Advent 1 Isaac Way

, Manchester, M4 7EF

Asking Price £235,000



****SIXTH FLOOR APARTMENT** ***ALLOCATED PARKING** **MODERN OPEN PLAN LIVING** **EN-SUITE TO MASTER** **LOVELY VIEWS** **CLOSE TO CITY CENTRE** **GOOD PUBLIC TRANSPORT LINKS****

Cousins Estate Agents are pleased to present to the sales market this stylish City Centre Apartment providing modern living with an open plan lounge/dining kitchen area, two double bedrooms with en-suite to master as well as an allocated parking space underground.

This attractive, two bedroom apartment is very well located just off Great Ancoats Street in the trendy district of New Islington, a stones throw away from the tram stop. Manchester's famous Northern Quarter is also within walking distance from the property and is home to an abundance of popular bars and restaurants. Manchester City Centre is easily accessible via public transport or on foot and Piccadilly train station is also less than one mile away. Without travelling into the City Centre you'll also find plenty of shops, supermarkets and facilities nearby such as the Etihad Campus where you'll find football, tennis and other resources.

Viewing is strongly recommended to appreciate the facilities and accommodation on offer.



Entrance Hallway 10'2" x 5'8" (3.10 x 1.74)

Open Plan Lounge/Kitchen 23'8" x 11'9" (7.23 x 3.59)

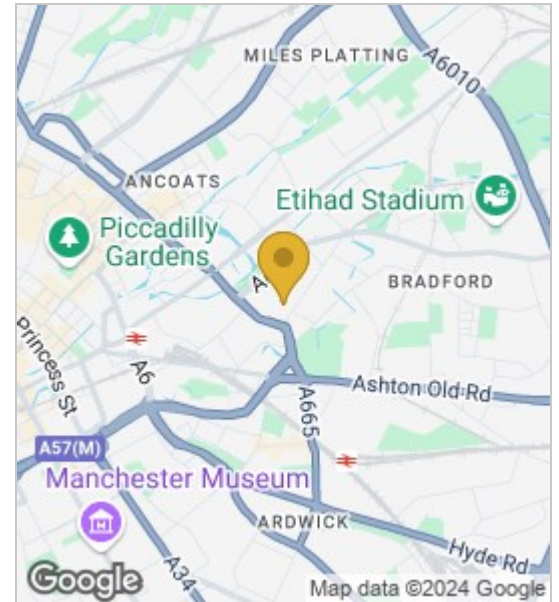
Bedroom One 17'0" x 8'7" (5.20 x 2.64)

Ensuite 4'8" x 5'1" (1.44 x 1.56)

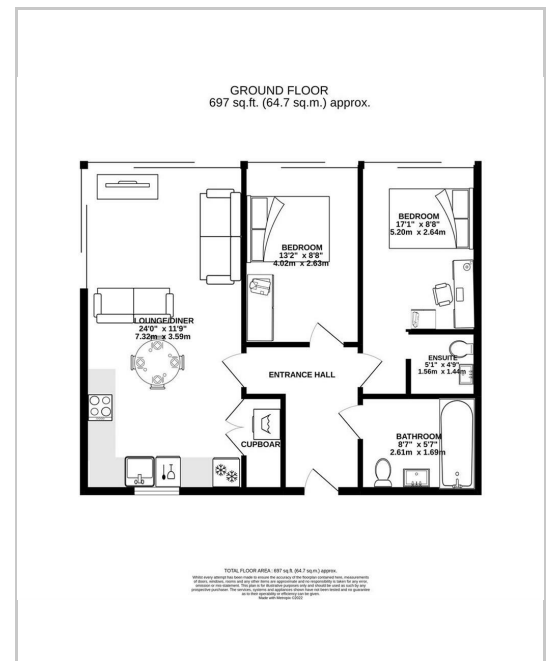
Bedroom Two 13'2" x 8'7" (4.02 x 2.63)

Bathroom 5'6" x 8'6" (1.69 x 2.61)

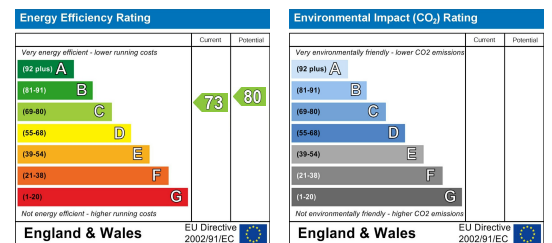
Area Map



Floor Plans



Energy Efficiency Graph



These particulars, whilst believed to be accurate are set out as a general outline only for guidance and do not constitute any part of an offer or contract. Intending purchasers should not rely on them as statements of representation of fact, but must satisfy themselves by inspection or otherwise as to their accuracy. No person in this firm's employment has the authority to make or give any representation or warranty in respect of the property.

