



39. Norfolk Crescent

Failsworth, Manchester, M35 0WG

Asking Price £270,000



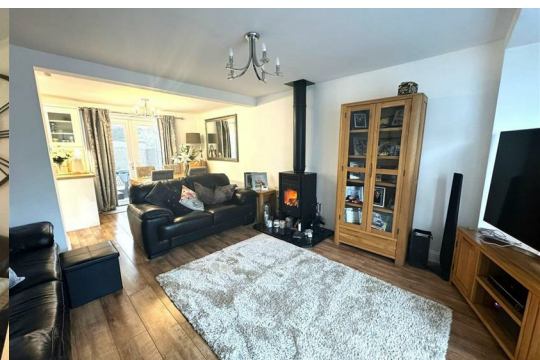
****SEMI DETACHED** **GARAGE** ** SIDE ABD FRONT DRIVEWAY** **FRONT AND REAR GARDENS** **DESIRABLE LOCATION** **IDEAL FOR FAMILIES** **MODERNISED THROUGHOUT ****

Cousins Estate Agents are delighted in offer this generously proportioned 3/4 bedroom semi-detached residence situated on the sought-after Norfolk crescent in Failsworth for sale. Well positioned, this property is an ideal choice for families, with a selection of local primary and secondary schools and amenities nearby.

Upon entry, you are greeted by an inviting hall leading to a spacious lounge area, seamlessly flowing into the kitchen/diner.

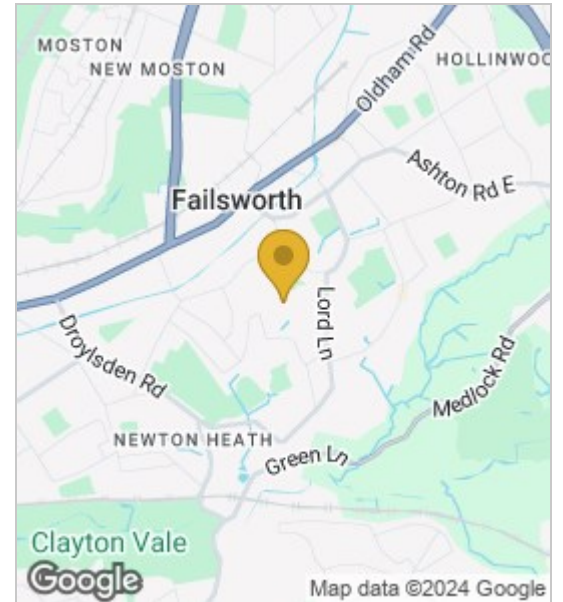
The first floor accommodates three bedrooms and a shared family bathroom.

Externally, the property front and rear, garden with garage to side ensuring privacy.



- Living room
- kitchen/ Dinning room
- Bedroom 4 / Downstairs
- WC
- Bedroom 1
- Bedroom 2
- Bedroom 3
- Family Bathroom
- Front of property
- Garden
- Driveway

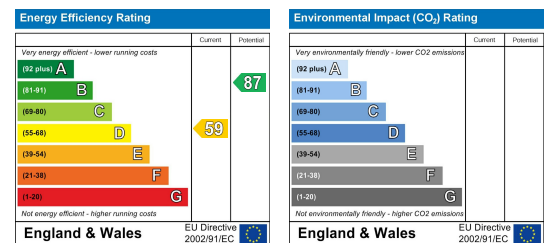
Area Map



Floor Plans



Energy Efficiency Graph



These particulars, whilst believed to be accurate are set out as a general outline only for guidance and do not constitute any part of an offer or contract. Intending purchasers should not rely on them as statements of representation of fact, but must satisfy themselves by inspection or otherwise as to their accuracy. No person in this firm's employment has the authority to make or give any representation or warranty in respect of the property.

