



125 Droylsden Road

, Manchester, M40 1NT

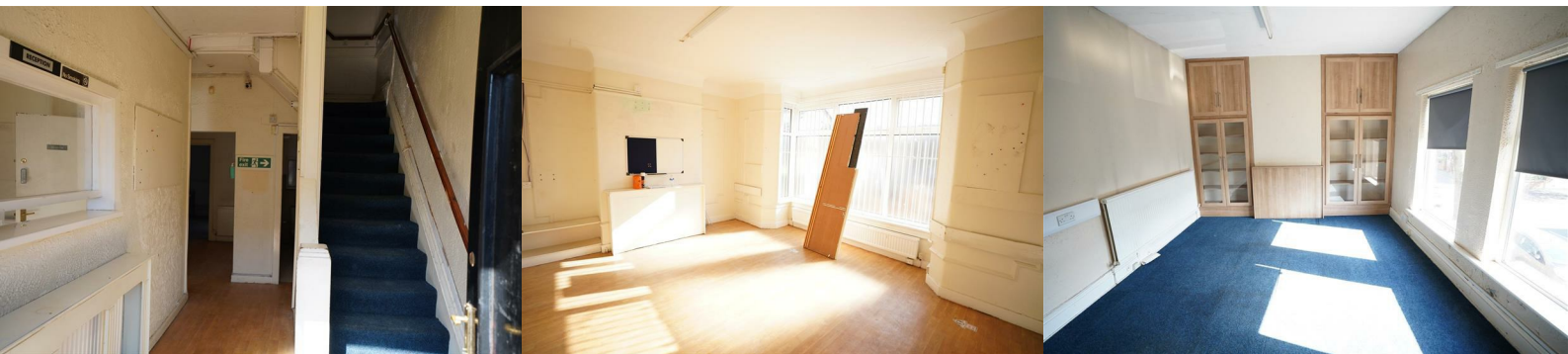
£295,000



*****LARGE COMMERCIAL PREMISES***FORMERLY DOCTORS SURGERY***CENTRAL LOCATION IN NEWTON HEATH***REAR ACCESS*** Cousins Estate agents are pleased to present this expansive commercial location for sale centrally located on Droylsden Road, Newton Heath close to the A62 Oldham Road.**

Previously in use as a doctors clinic this fully-extended property boasts a mix of office and treatment rooms with the possibility of a number of uses subject to planning.

With 2400 sq ft of space and occupying a central location in the centre of the Newton Heath community this is a rare opportunity to obtain a well maintained building!



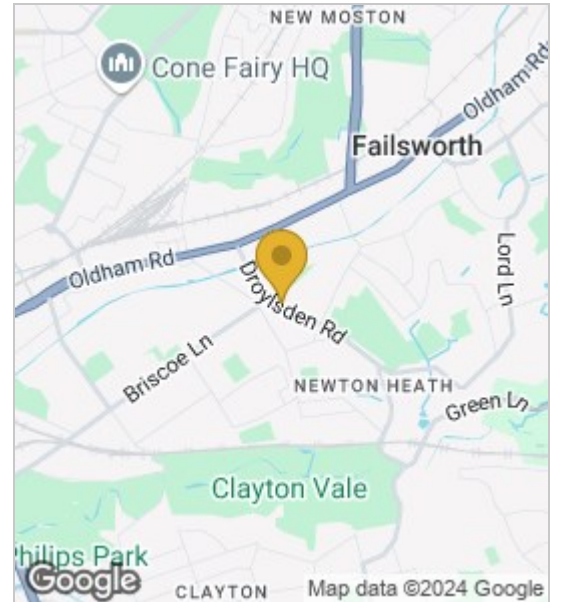
Planning department

All enquiries to Manchester City council

Deposit

One months rent

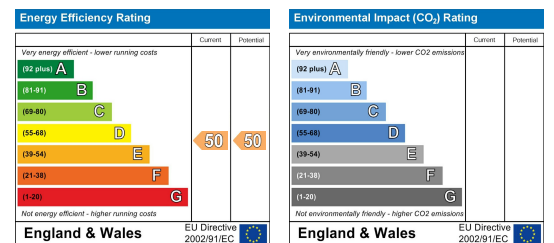
Area Map



Floor Plans



Energy Efficiency Graph



These particulars, whilst believed to be accurate are set out as a general outline only for guidance and do not constitute any part of an offer or contract. Intending purchasers should not rely on them as statements of representation of fact, but must satisfy themselves by inspection or otherwise as to their accuracy. No person in this firm's employment has the authority to make or give any representation or warranty in respect of the property.

