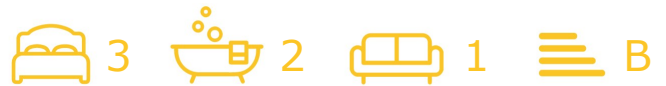




28 Frank Birchall Close

, Manchester, M40 1RP

£1,350



*****WELL PRESENTED***MODERN BUILD***GARAGE***DRIVEWAY***SPACIOUS GARDENS*** Cousins Estate Agents are pleased to present this attractively presented THREE BEDROOM SEMI-DETACHED house situated in popular Newton heath, Manchester.**

This well-presented modern build benefits from spacious well-tended gardens to front and back with a private driveway, and would be ideal for a family.

The internal accommodation includes: Entrance Hallway, Kitchen/Diner, Living room with french doors to the garden , three bedrooms and family bathroom.

Externally there is a private driveway with a garage and front garden, to the rear is a spacious garden with sitting area, lawn and decking.

The property is conveniently located and lies within close proximity of various amenities and facilities. Shops, supermarkets and schools are all found within walking distance. Newton Heath Metrolink tram station is just a 10 minute walk away which provides frequent and quick access into Manchester city centre.



Entrance Room 16'0"*5'4" (4.9*1.63)

Kitchen/Diner 16'0"*7'10" (4.9*2.4)

Living room 13'7"*10'10" (4.16*3.32)

Downstairs Wc

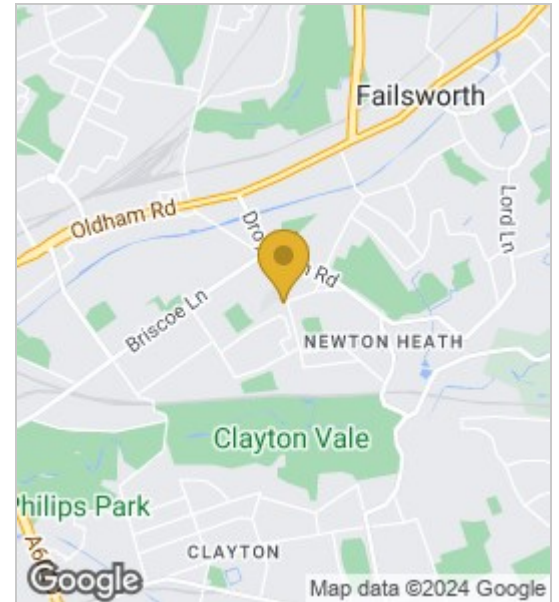
Front Bedroom 13'7"*8'2" (4.16*2.5)

Back Bedroom 12'5"*7'2" (3.8*2.2)

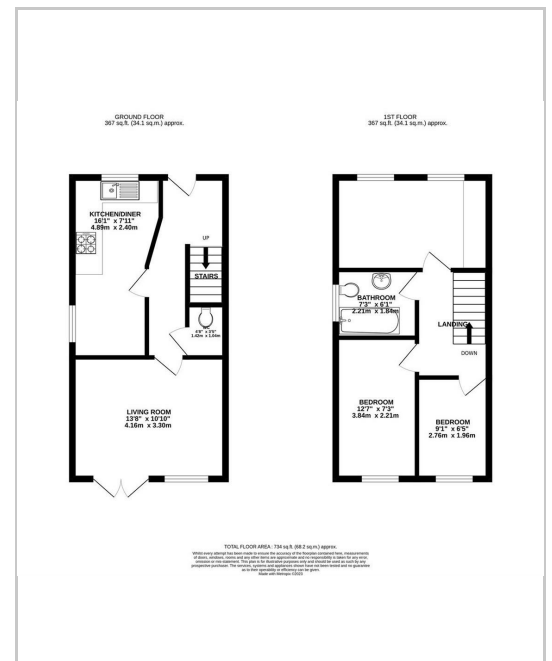
Bedroom 3 9'0"*6'2" (2.75*1.88)

Council Tax Band: B

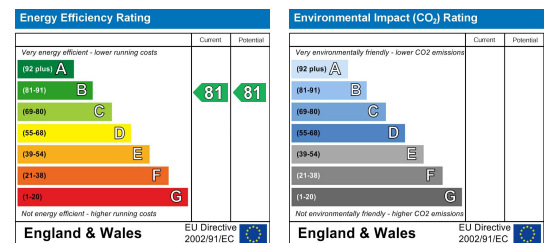
Area Map



Floor Plans



Energy Efficiency Graph



These particulars, whilst believed to be accurate are set out as a general outline only for guidance and do not constitute any part of an offer or contract. Intending purchasers should not rely on them as statements of representation of fact, but must satisfy themselves by inspection or otherwise as to their accuracy. No person in this firm's employment has the authority to make or give any representation or warranty in respect of the property.

