



51 Assheton Crescent

, Manchester, M40 1NN

£1,100 Per Month



*****THREE BEDROOMS***SEMI-DETACHED***CONSERVATORY***DRIVEWAY***ATTRACTIVE GARDEN*** Cousins Estate Agents are pleased to present this THREE BEDROOM SEMI DETACHED family home, desirably located in Newton Heath close to Clayton Bridge and popular outdoor spaces such as Clayton Vale and Brookdale Park. Well regarded schools and local amenities can be found nearby.**

The internal accommodation includes: Entrance Hall, Lounge/Diner, Kitchen, Conservatory, three bedrooms & family bathroom. Externally, the property is garden fronted with a driveway and to the rear a neat garden including paved patio area and grass lawn. Located approximately 5 miles outside of the Manchester city centre, the property enjoys easy access to the many nearby city and town amenities. Nearby you will find ample routes into the city with local schools within easy reach as well.



Entrance Hallway

Lounge/Diner 12'4"*11'6" (3.77*3.53)

Kitchen 14'8"*7'6" (4.475*2.3)

Conservatory 14'7"*6'6" (4.45*2)

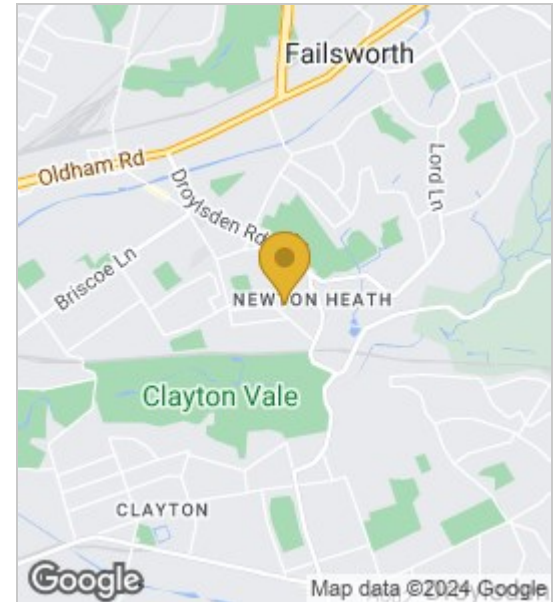
Bedroom 1 8'4"*12'0" (2.565*3.674)

Bedroom 2 8'10"*8'6" (2.7*2.6)

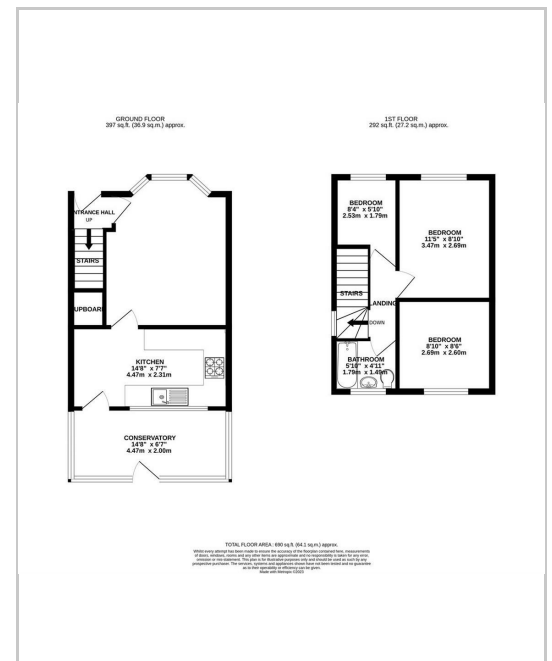
Bedroom 3 7'0"*5'11" (2.15*1.82)

Bathroom 5'4"*4'9" (1.65*1.47)

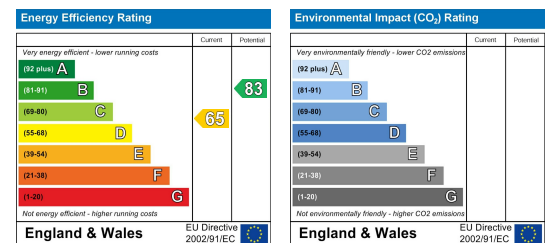
Area Map



Floor Plans



Energy Efficiency Graph



These particulars, whilst believed to be accurate are set out as a general outline only for guidance and do not constitute any part of an offer or contract. Intending purchasers should not rely on them as statements of representation of fact, but must satisfy themselves by inspection or otherwise as to their accuracy. No person in this firm's employment has the authority to make or give any representation or warranty in respect of the property.

