



1 Timperley Fold , Ashton-Under-Lyne, OL6 8SB

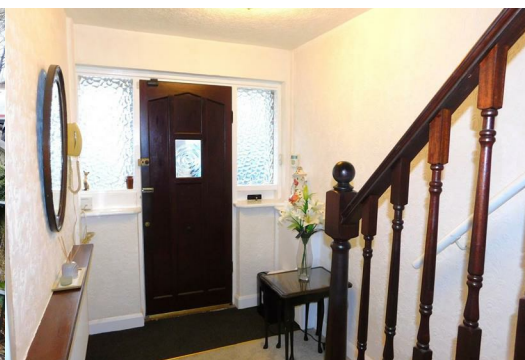
Offers Over £210,000



*****NO CHAIN***WELL PRESENTED***THREE BEDROOMS***TWO RECEPTION ROOMS***SEMI-DETACHED***DRIVEWAY & GARDENS***ATTRACTIVE CUL-DE-SAC*** Cousins Estate Agents are pleased to bring this THREE BEDROOM SEMI-DETACHED FAMILY HOME to market attractively located in a cul-de-sac close to Ashton town centre and local amenities.**

The house benefits from neatly laid gardens and front driveway and the well maintained internal accommodation consists of: Internal porch, Hallway with storage, bay-fronted Living room with double doors to the rear Lounge/Diner which opens onto the back garden, Kitchen, Three bedrooms including two double and one single, Bathroom and separate WC.

Timperley Fold is served by an excellent range of shops and amenities within nearby Ashton-under-Lyne town centre, the property benefits from superb road and public transport links and lies within the catchment area of well regarded schools.



Porch

Entrance Hallway 14'1"*5'10" (4.3*1.8)

Living Room 13'1"*11'11" (4*3.635)

Lounge/Diner 12'1"*10'11" (3.7*3.35)

Kitchen 8'11"*7'4" (2.73*2.25)

Bedroom 1 9'10"*13'1" (3*4)

Bedroom 2 12'1"*10'3" (3.7*3.13)

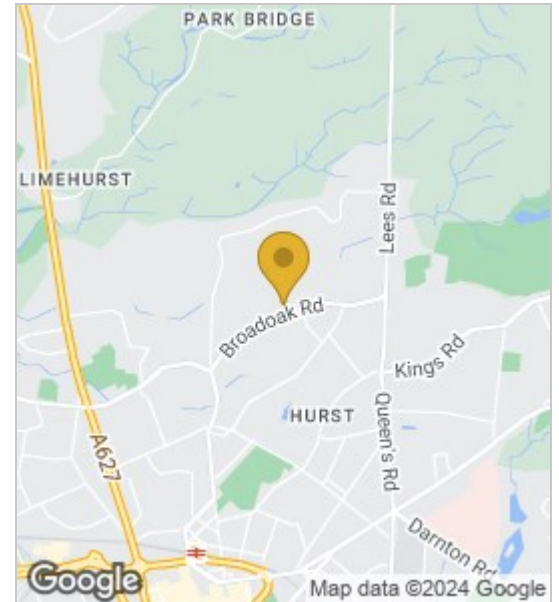
Bedroom 3 7'10"*6'11" (2.4*2.115)

Bathroom 7'4"*5'4" (2.25*1.65)

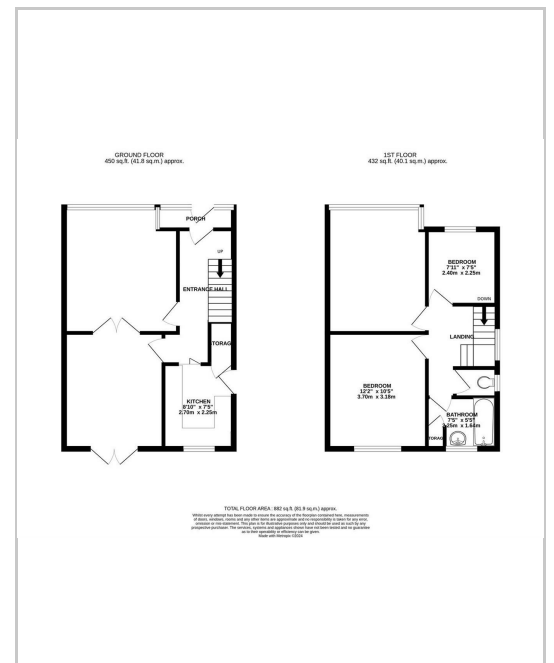
Tenure: Freehold

Council Tax band: B

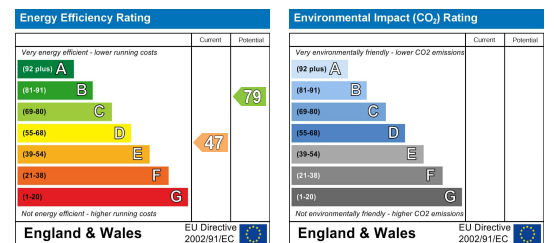
Area Map



Floor Plans



Energy Efficiency Graph



These particulars, whilst believed to be accurate are set out as a general outline only for guidance and do not constitute any part of an offer or contract. Intending purchasers should not rely on them as statements of representation of fact, but must satisfy themselves by inspection or otherwise as to their accuracy. No person in this firm's employment has the authority to make or give any representation or warranty in respect of the property.

