



## 3 Leith Place

Oldham, Lancashire, OL8 3WG

**Offers Over £240,000**



\*\*\*\*DETACHED\*\*\*\*THREE BEDROOMS\*\*\*\*DRIVEWAY\*\*\*\*PRIVATE REAR GARDEN\*\*\*\*

Cousins are thrilled to offer for sale this stunning detached house situated in a popular cul-de-sac, the property is spacious throughout. The internal accommodation comprises entrance hallway, lounge, fitted kitchen/dining room, with patio doors leading out to the rear garden and a downstairs cloak room.

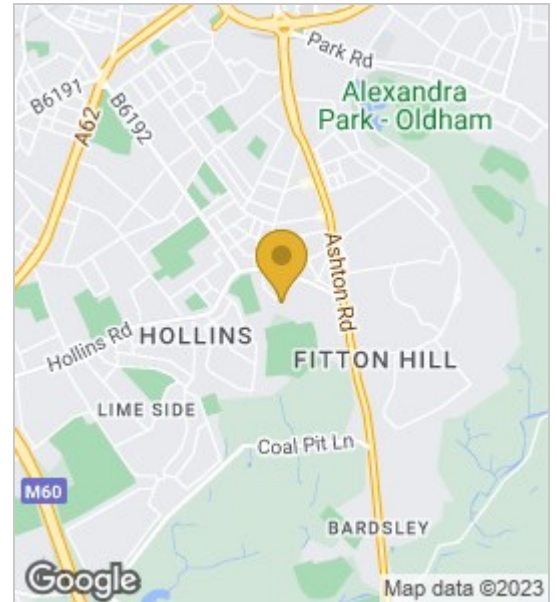
To the first floor there are three good sized bedrooms and a family bathroom with the added benefit of an en-suite to the master.

Rear Garden

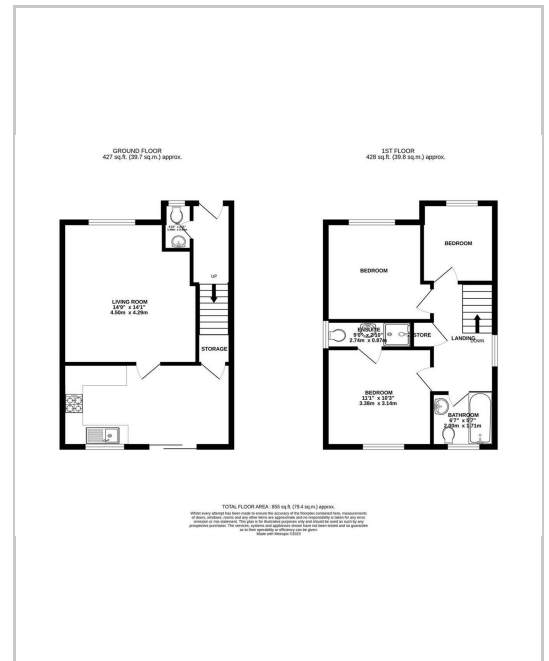
Private and enclosed large rear garden perfect for outdoor dining.



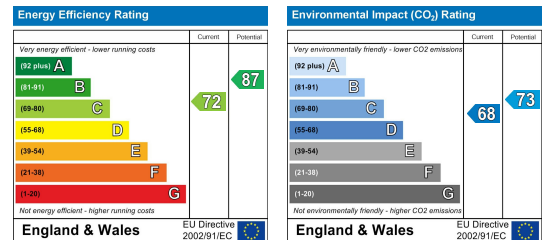
## Area Map



## Floor Plans



## Energy Efficiency Graph



These particulars, whilst believed to be accurate are set out as a general outline only for guidance and do not constitute any part of an offer or contract. Intending purchasers should not rely on them as statements of representation of fact, but must satisfy themselves by inspection or otherwise as to their accuracy. No person in this firm's employment has the authority to make or give any representation or warranty in respect of the property.

