



142 Ashton Road West

Failsworth, Manchester, M35 0FB

Offers Over £160,000

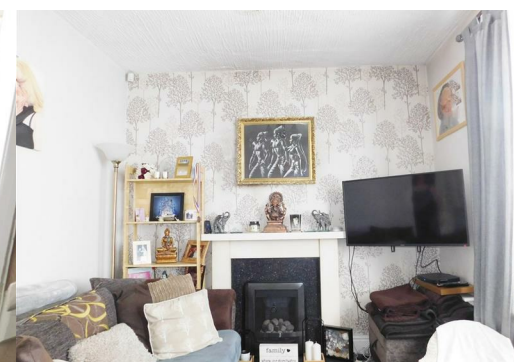
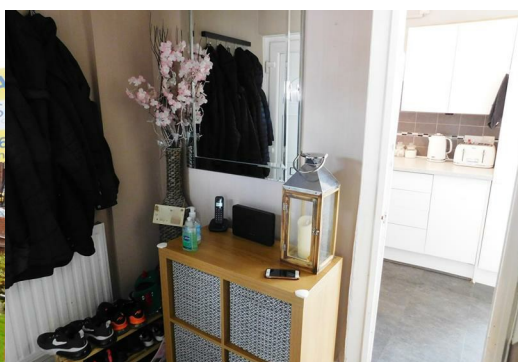


*****SEMI-DETACHED***TWO DOUBLE BEDROOMS***MODERN & SPACIOUS***CONVENIENT LOCATION***DRIVEWAY***GARDENS***PATIO & SITTING AREAS***VIRTUAL TOUR*****
Cousins Estate Agents are delighted to present this **HOMELY TWO BEDROOM SEMI-DETACHED HOUSE** conveniently located on Ashton Road West, Failsworth in close proximity to shops, supermarkets and local schools.

The house has been well-maintained and new kitchen units and garden furniture have recently been installed. With larger than average bedrooms, off-road parking and gardens this home would be perfect for a young family or first time buyer.

The accommodation consists of: Entrance Hall, Bay-fronted living room, Kitchen/Diner, Modern 3 piece Bathroom suite and Two double Bedrooms.

Ashton Road West is situated just off the A62 Oldham Road and Lord Lane, close to all amenities including supermarkets, chemists, shopping outlets and local schools. The A62 provides fantastic commuter links with the M60 and Metrolink nearby, and Manchester City centre a short drive or bus journey.



Entrance Hallway

Living room 12'4"*12'4" (3.765*3.783)

Kitchen/Diner 18'4"*8'8" (5.6*2.65)

Bathroom 7'0"*6'2" (2.14*1.9)

Landing 8'7"*5'0" (2.64*1.53)

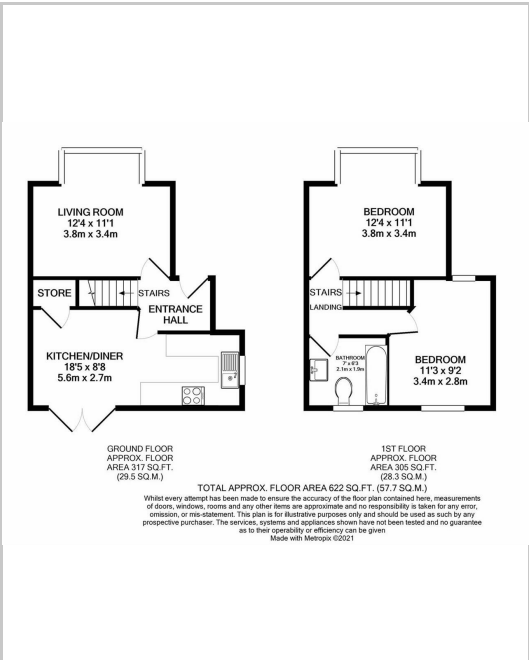
Front Bedroom 11'1"*12'4" (3.385*3.783)

Back Bedroom 11'7"*8'11" (3.54*2.737)

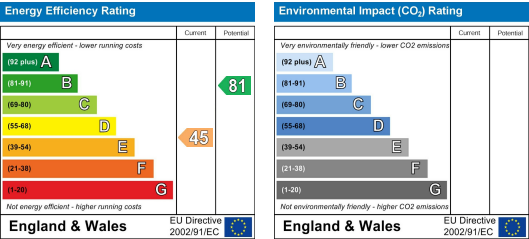
Area Map



Floor Plans



Energy Efficiency Graph



These particulars, whilst believed to be accurate are set out as a general outline only for guidance and do not constitute any part of an offer or contract. Intending purchasers should not rely on them as statements of representation of fact, but must satisfy themselves by inspection or otherwise as to their accuracy. No person in this firms employment has the authority to make or give any representation or warranty in respect of the property.

