



The Coachhouse Beckett Street , Oldham, OL4 3LB

Offers In The Region Of £250,000

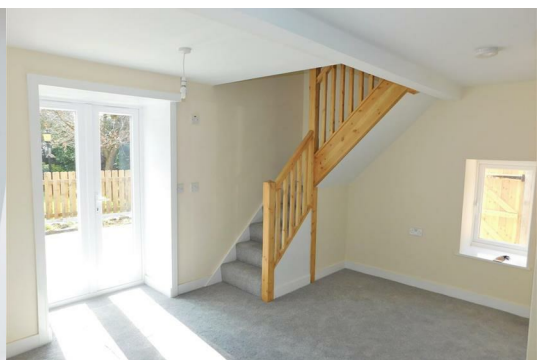


UNIQUE OPPORTUNITYHISTORIC HOUSE***THREE BEDROOMS***BEAUTIFULLY RENOVATED***GARDEN***PATIO AREA***ALLOCATED PARKING***VIRTUAL TOUR*** SOUTH FACING GARDEN***Cousins Estate Agents are excited to present for sale this one-of-a-kind THREE BEDROOM STONE-BUILT HISTORIC HOME situated in popular Lees, close to local amenities.

The property has been tastefully renovated, and offers brand-new modern accommodation, including: Entrance Hallway, Modern fitted Kitchen with integrated appliances, Dining area, Living room with french doors opening to patio area, Downstairs WC and Utility room. To the upper floors are three bedrooms and two bathrooms, one being en-suite. There is a spacious dressing room with velux window in the loft.

Externally, the property offers a private rear garden and allocated parking to the front.

The property is situated just off Beckett Street adjacent to Woodhead Close, close to St Edwards Primary school and within walking distance to Lees village centre which has a variety of independent shops, pubs and restaurants. Schools and supermarkets are also found nearby, and Oldham town centre is just a 10 minute drive away.



Entrance Room 16'8"*8'2" (5.1*2.5)

Kitchen 13'9"*7'6" (4.2*2.3)

Living room 19'8"*13'9" (6*4.2)

Downstairs WC 3'3"*3'3" (1*1)

Utility room 3'3"*3'3" (1*1)

Bedroom 1 10'9"*8'2" (3.3*2.5)

Bedroom 2 10'9"*5'6" (3.3*1.7)

Bathroom 9'2"*5'6" (2.8*1.7)

Loft Bedroom 10'5"*8'2" (3.2*2.5)

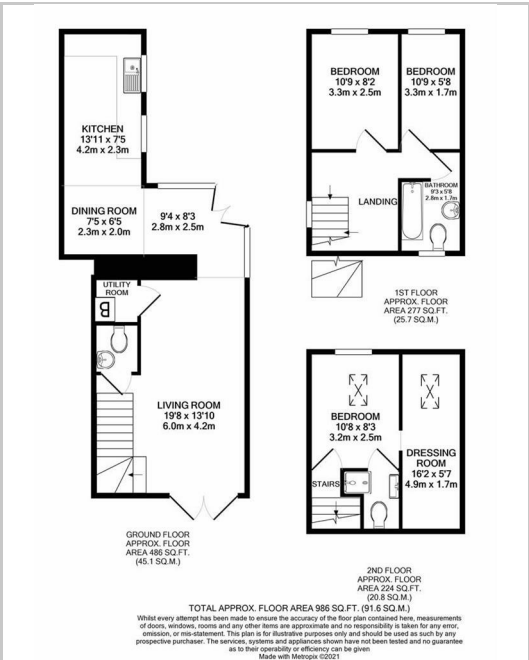
En-suite Bathroom 3'3"*4'11" (1*1.5)

Dressing room 16'4"*4'7" (5*1.4)

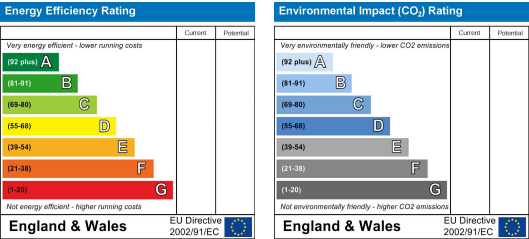
Area Map



Floor Plans



Energy Efficiency Graph



These particulars, whilst believed to be accurate are set out as a general outline only for guidance and do not constitute any part of an offer or contract. Intending purchasers should not rely on them as statements of representation of fact, but must satisfy themselves by inspection or otherwise as to their accuracy. No person in this firm's employment has the authority to make or give any representation or warranty in respect of the property.

