

CHISSICK

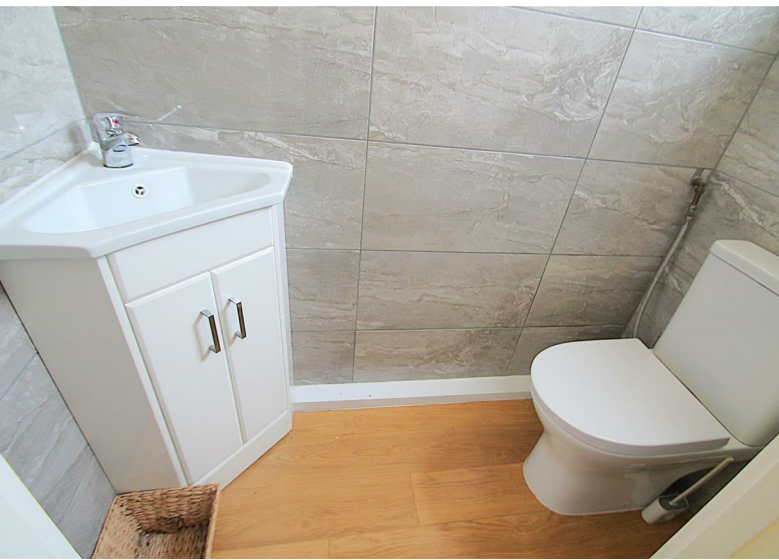
Residential Sales and Lettings



Long Green, Chigwell, IG7 4JD

£419,950

 3  1  1  D



Long Green, Chigwell, IG7 4JD

£419,950



Entrance

Double glazed door to:

Entrance Hall

Built in cupboard with space for tumble dryer

Ground Floor Cloakroom

Tiled with low flush WC, wash hand basin with mixer tap, obscure double glazed window to front

Fitted Kitchen

10'4x8'3 (3.15mx2.51m)

Part tiled with modern white base and wall units, granite style work surfaces, inset sink unit with mixer tap, built in electric hob with oven under, integrated dishwasher, plumbing for automatic washing machine, double glazed window to front

Lounge

18'2x14'3 (5.54mx4.34m)

Laminate style flooring, spotlights two radiators, sliding double glazed doors to rear garden

Stairs to First Floor Landing

Skylight

Bedroom One

14'2x9'9 (4.32mx2.97m)

Laminate style flooring, radiator, double glazed window to rear

Bedroom Two

9'9 x8'9 (2.97m x2.67m)

Dado rail, laminate style flooring, radiator

Bedroom Three

10'2x6'4 (3.10mx1.93m)

Laminate style flooring, radiator, double glazed window to front

First Floor Bathroom/WC

Tiled with suite comprising low flush WC, panelled bath with shower screen, mixer tap and separate shower over, vanity wash hand basin with mixer tap, skylight, heated towel rail, built in cupboard housing Worcester gas central heating boiler

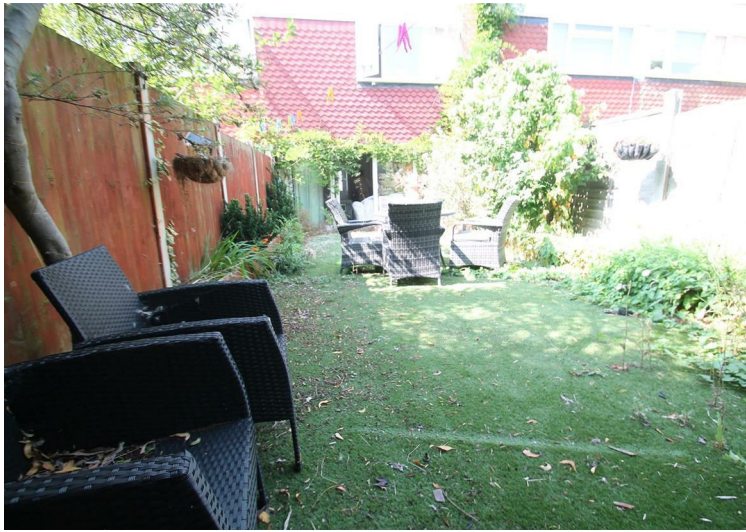
Exterior

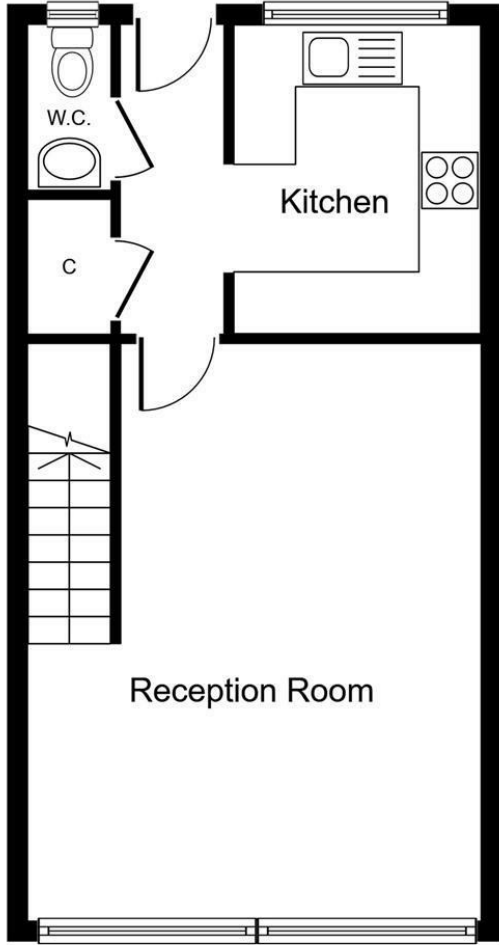
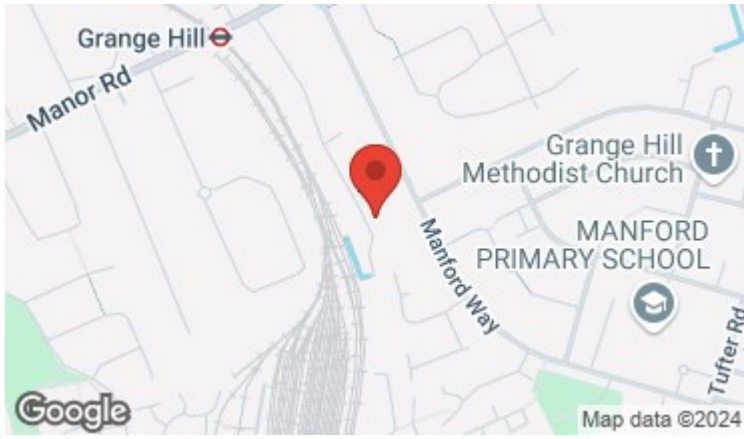
The front is paved providing off street parking

There is own rear garden with astro turf, mature shrub borders and good size garden shed

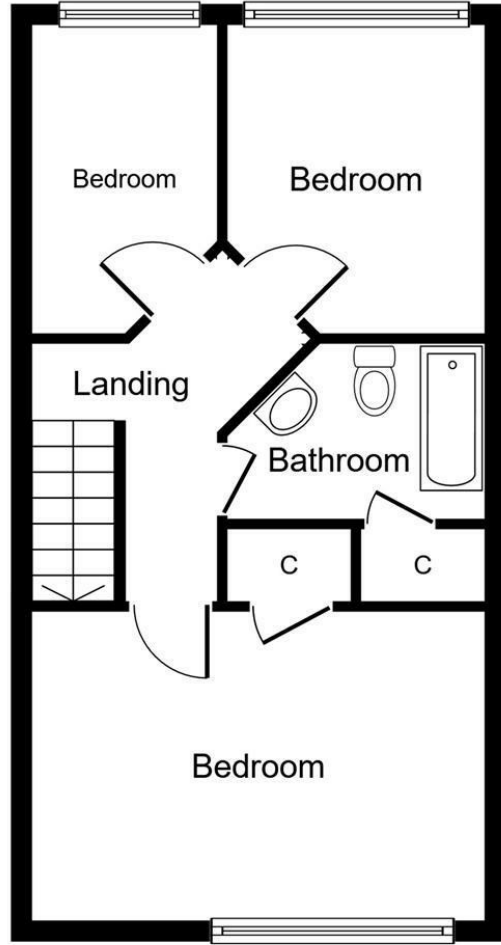
THERE IS OWN GARAGE EN BLOC

Council Tax Band D





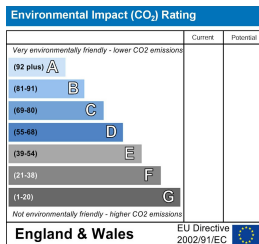
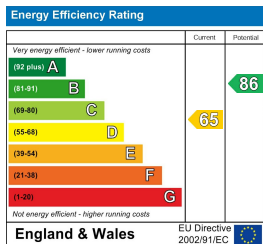
Ground Floor



First Floor

Whilst every attempt has been made to ensure the accuracy of the floor plan contained here, measurements of doors, windows, rooms and any other items are approximate and no responsibility is taken for any error, omission, or mis-statement. The measurements should not be relied upon for valuation, transaction and/or funding purposes. This plan is for illustrative purposes only and should be used as such by any prospective purchaser or tenant. The services, systems and appliances shown have not been tested and no guarantee as to their operability or efficiency can be given.

Copyright V360 Ltd 2024 | www.houseviz.com



These particulars, whilst believed to be accurate are set out as a general outline only for guidance and do not constitute any part of an offer or contract. Intending purchasers should not rely on them as statements of representation of fact, but must satisfy themselves by inspection or otherwise as to their accuracy. No person in this firm's employment has the authority to make or give any representation or warranty in respect of the property.