

# CHISSICK

Residential Sales and Lettings



**Greenleafe Drive, Ilford, IG6 1LJ**

**£499,950**

 2  1  3  E



# Greenleafe Drive, Ilford, IG6 1LJ

## £499,950



### Entrance

Double glazed door to Entrance Hall

### Entrance Hall

Radiator

### Reception

17'x11'11" (5.18mx3.63m)

Feature fireplace surround, wall lights points, radiator, double glazed bay window to front

### Reception Two

10'x8' (3.05mx2.44m)

Coved cornicing, radiator, double glazed window to rear, part glazed door to:

### Reception Three

12'6x10'11" (3.81mx3.33m)

Sliding patio doors to rear, radiator

### Lean to

Double glazed doors and windows to rear garden

### Bedroom One

14'5x9'4" (4.39mx2.84m)

Built-in fitted wardrobes, wall light points, coved cornicing, radiator, double glazed bay window to front

### Bedroom Two

13'1x9'10" (3.99mx3.00m)

Built-in wardrobes to one wall, built in headboard with end tables, radiator, double glazed window to rear, velux style window to rear

### Kitchen

11'6x10'5" (3.51mx3.18m)

Fitted with range of base and wall cabinets, work surfaces, inset sink unit with mixer tap, built in electric hob, eye level double oven and grill, plumbing for automatic washing machine, obscure double glazed window to side, access to loft, Amtico style flooring

### Shower Room

Tiled with suite comprising walk-in shower cubicle, vanity wash hand basin with cupboard under, radiator, obscure double glazed window to side

### Separate WC

Low flush WC, radiator, obscure double glazed window to side

### Exterior

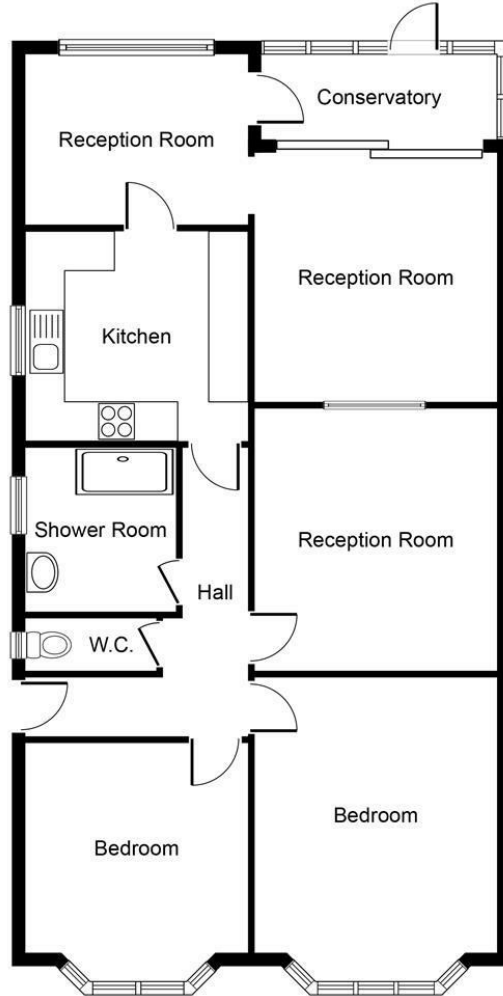
There is own front garden with shared drive to double gates giving access to rear garden

The garden is well landscaped and mainly paved with shrubs and trees

### Council Tax Band E

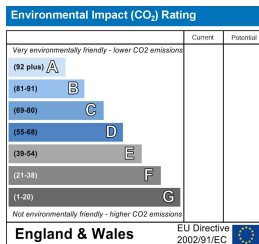
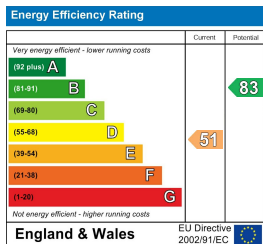






Whilst every attempt has been made to ensure the accuracy of the floor plan contained here, measurements of doors, windows, rooms and any other items are approximate and no responsibility is taken for any error, omission, or mis-statement. The measurements should not be relied upon for valuation, transaction and/or funding purposes. This plan is for illustrative purposes only and should be used as such by any prospective purchaser or tenant. The services, systems and appliances shown have not been tested and no guarantee as to their operability or efficiency can be given.

Copyright V360 Ltd 2024 | www.houseviz.com



These particulars, whilst believed to be accurate are set out as a general outline only for guidance and do not constitute any part of an offer or contract. Intending purchasers should not rely on them as statements of representation of fact, but must satisfy themselves by inspection or otherwise as to their accuracy. No person in this firm's employment has the authority to make or give any representation or warranty in respect of the property.