



HUNTERS[®]
HERE TO GET *you* THERE

39 Stanbridge Road, Tilsworth, Leighton Buzzard, LU7 9PT

39 Stanbridge Road, Tilsworth, Leighton Buzzard, LU7 9PT

Offers In Excess Of £850,000

- FIVE BEDROOM DETACHED FAMILY HOME
- EN-SUITES TO MAIN and GUEST BEDROOMS
- HOME OFFICE
- DRIVEWAY PARKING FOR MULTIPLE VEHICLES and DOUBLE GARAGE
- WELL APPOINTED KITCHEN/BREAKFAST ROOM
- HIGHLY SOUGHT AFTER VILLAGE LOCATION
- NO ONWARD CHAIN
- LANDSCAPED REAR GARDEN
- CLOAKROOM & UTILITY ROOM
- THREE RECEPTION ROOMS

Hunters are delighted to market this truly stunning five bedroom detached family home, located within a prime location in the Bedfordshire village of Tilsworth and offered with NO ONWARD CHAIN.

As you enter the property you are greeted by a spacious entrance hall, lounge with oak engineered flooring and the dining room adjacent offers ample seating space. The well appointed kitchen/breakfast room with integrated appliances offer plenty of space with an opening to the Orangery which looks out onto the beautiful rear garden. The ground floor also benefits from a cloakroom, utility room and home office.

The first floor comprises; main bedroom with built in wardrobes and a four piece en-suite, the guest bedroom equally offers built-in wardrobes and a three piece en-suite. There are three further bedrooms all with built-in wardrobes and a four piece family bathroom to accommodate those rooms.

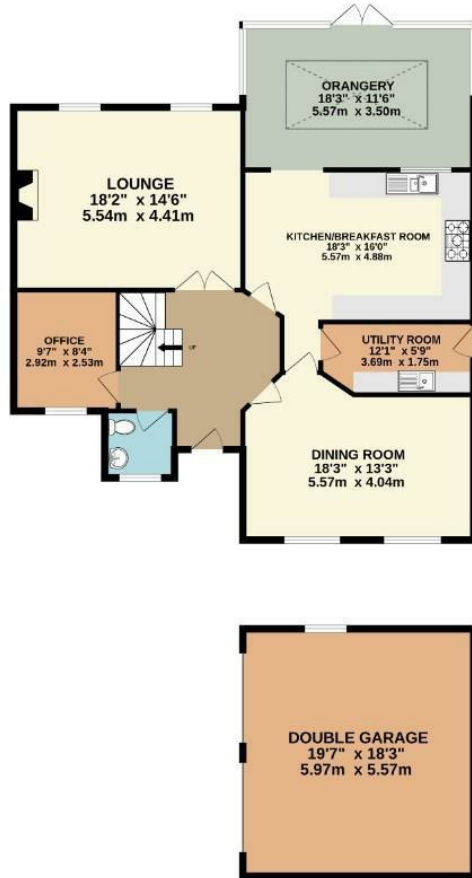
Externally this property boasts an enclosed landscaped rear garden which is mainly laid to lawn with a patio and decking area by the pond. To the front is driveway parking for numerous vehicles and a double garage.

Tilsworth is a village located in the county of Bedfordshire, England. It is situated near the town of Leighton Buzzard and is part of the Central Bedfordshire district. The village has a rural character with open fields and countryside surroundings.

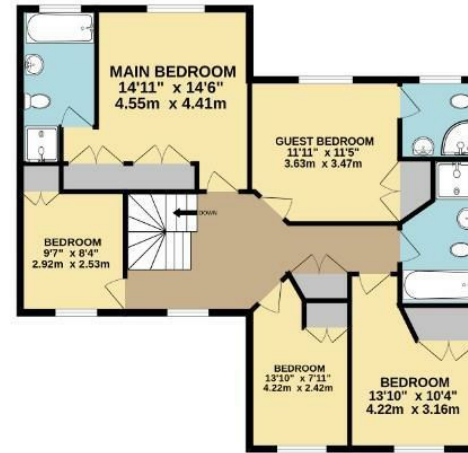
Although Tilsworth is a relatively quiet and peaceful village, it benefits from its proximity to nearby towns and amenities. Residents can access services, schools, shops, and other facilities in Leighton Buzzard.

Hunters Leighton Buzzard 11 Bridge Street, Leighton Buzzard, LU7 1AH | 01525 300899
leightonbuzzard@hunters.com | www.hunters.com

GROUND FLOOR
1579 sq.ft. (146.7 sq.m.) approx.



1ST FLOOR
971 sq.ft. (90.2 sq.m.) approx.



TOTAL FLOOR AREA : 2551 sq.ft. (237.0 sq.m.) approx.

Whilst every attempt has been made to ensure the accuracy of the floorplan contained here, measurements of doors, windows, rooms and any other items are approximate and no responsibility is taken for any error, omission or mis-statement. This plan is for illustrative purposes only and should be used as such by any prospective purchaser. The services, systems and appliances shown have not been tested and no guarantee as to their operability or efficiency can be given.
Made with Metropix 5/2024

