



Model Farm Close, Mottingham, SE9

Guide Price £275,000

🛏️ 2 🚿 1 🪑 1



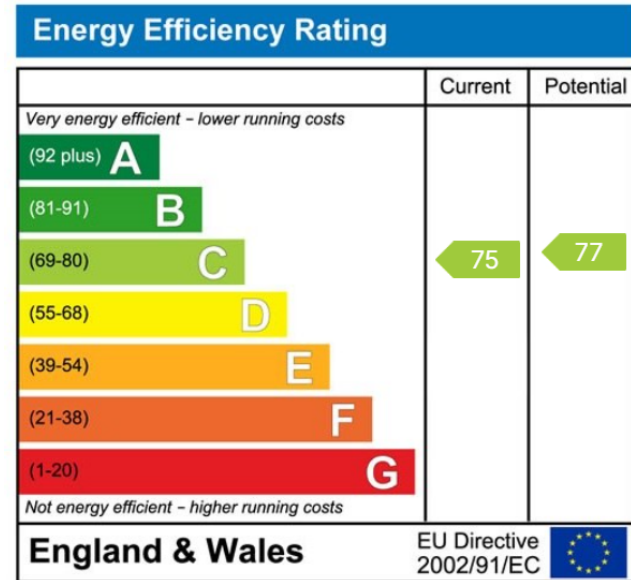
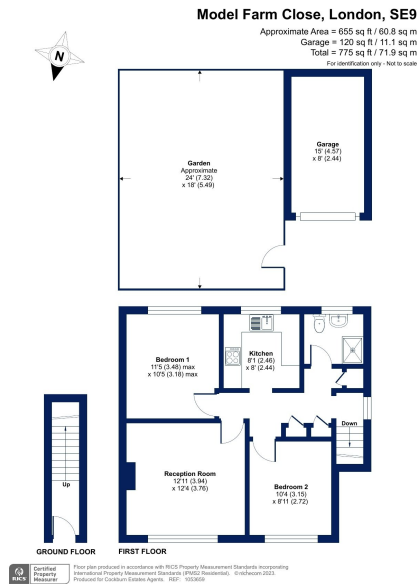
- Chain Free Sale
- Private Well Maintained Garden To Rear
- Within A Stones Throw Of Mottingham Village Shops & Amenities
- Great Bus Links To Eltham, Bromley & Chislehurst
- Perfect For First Time Buyers
- Two Bedroom First Floor Maisonette
- Share Of Freehold - Lease Currently Being Extended To 999 Years
- Easy Reach Of Mottingham Railway Station Keeping You Connected With The City
- Private Garage To Rear Of Property
- Council Tax Band C - London Borough Of Bromley



For Sale: Charming 2-Bedroom Maisonette in Mottingham, London SE9

***** GUIDE PRICE £275,000 - £300,000 *** CHAIN FREE *****

Introducing a fantastic opportunity for first-time buyers to acquire a delightful two-bedroom first-floor maisonette in the heart of Mottingham. Situated in a tranquil neighborhood, this property offers a perfect blend of comfort, convenience, and style.



Cockburn EA
 352 Footscray Road,
 London, SE9 2EB
 t: 020 8859 8590