



Dorset Road, SE9 4QY
Asking Price Of £475,000

COCKBURN
ESTATE AND LETTINGS AGENTS

Dorset Road, SE9 4QY

**** COMPLETE ONWARD CHAIN ****

Welcome to Dorset Road, a stunning two-bedroom terraced home located in the heart of SE9. This exceptional property offers a spacious and inviting atmosphere, boasting a large reception room, two bedrooms, kitchen and family bathroom, with exquisite finishes throughout. With its ideal location and superb features, this home presents an incredible opportunity for those seeking comfort, style, and convenience.

Externally, the property boasts a private garden, offering a tranquil outdoor space to unwind and enjoy the fresh air. Whether you desire a spot for gardening, alfresco dining, or simply lounging in the sun, this well-maintained garden provides the perfect backdrop.

The location of Dorset Road is second to none. Situated in a desirable neighborhood, this home enjoys close proximity to an array of amenities, including shops, restaurants, and parks. Commuting is a breeze, with excellent transport links nearby, ensuring easy access to London and beyond.



KEY FEATURES:

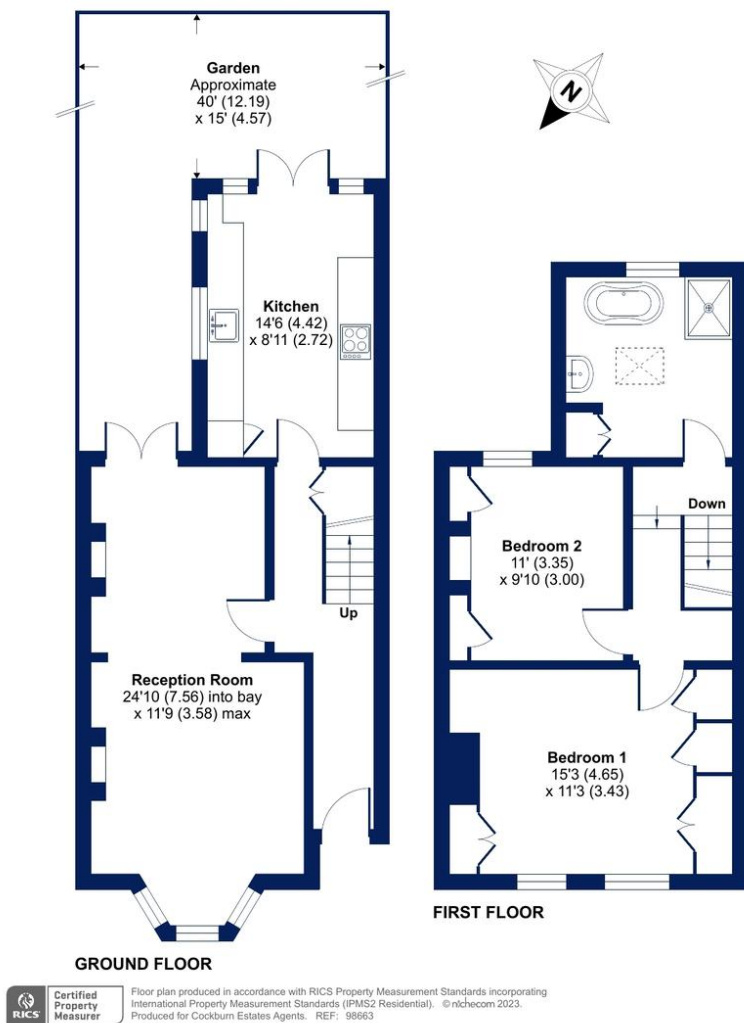
- ◆ Complete Onward Chain
- ◆ Two Double Bedrooms
- ◆ Large Reception Room
- ◆ Beautifully Maintained Garden To Rear
 - ◆ On Street Permit Parking
- ◆ Finished To A High Standard Throughout
- ◆ Close Proximity To All Local Amenities Including Shops & Schools
 - ◆ Fantastic Location
- ◆ Excellent Transport Links For Those Needing To Commute
 - ◆ Energy Rating D – Potential B
- ◆ Council Tax Band D – Bromley London Borough Council



Dorset Road, London, SE9

Approximate Area = 936 sq ft / 86.9 sq m

For identification only - Not to scale



Score	Energy rating	Current	Potential
92+	A		
81-91	B		85 B
69-80	C		
55-68	D	62 D	
39-54	E		
21-38	F		
1-20	G		

Cockburn EA

38 Mottingham Road,
London, SE9 4QR

t: **020 8857 8857** cockburn-online.co.uk

COCKBURN
ESTATE AND LETTINGS AGENTS

IMPORTANT: we would like to inform prospective purchasers that these sales particulars have been prepared as a general guide only. A detailed survey has not been carried out, nor the services, appliances and fittings tested. Room sizes should not be relied upon for furnishing purposes and are approximate. If floor plans are included, they are for guidance only and for illustration purposes only and may not be to scale. If there are any important matters likely to affect your decision to buy, please contact us before viewing the property.