



Hainault Street, New Eltham, SE9

£450,000

🛏️ 2 🚿 1 🚗 1



- Wonderful Two Bedroom End Terraced House
- Residential Permit Parking
- Extended Conservatory
- Within A Stones Throw Of New Eltham Railway Station
- Ideal First Time Purchase Or Buy To Let Investment
- Finished To High Standard Throughout
- Charming Garden To Rear
- Walking Distance To New Eltham Village Shops & Amenities
- Excellent Bus Links Keeping You Connected With Eltham, Greenwich & Sidcup
- Council Tax Band D - Royal Borough Of Greenwich

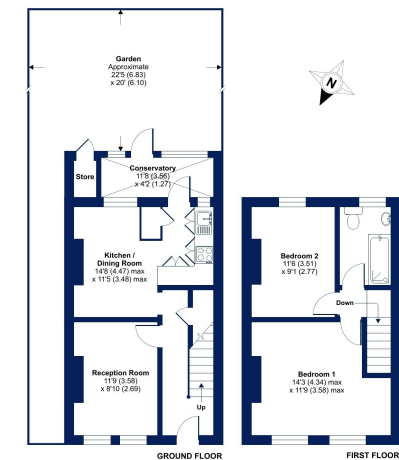


Introducing Hainault Street - A Spectacular Two-Bed End Terraced Home in the Heart of New Eltham

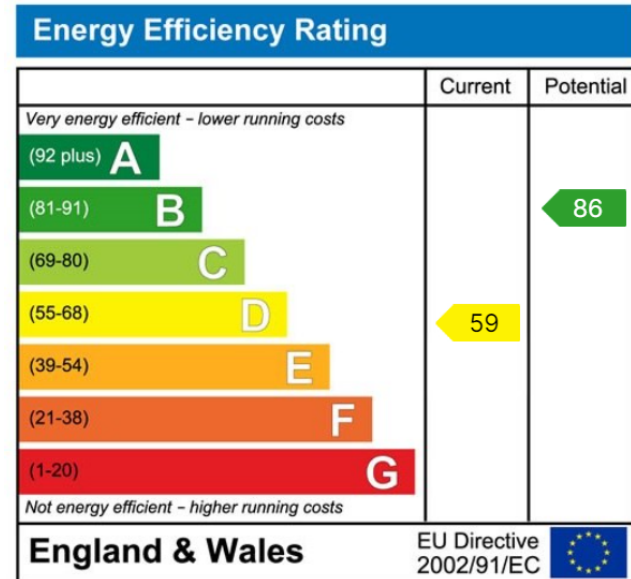
Settled in the heart of New Eltham, this stunning two-bedroom end-terraced home at Hainault Street is a perfect blend of contemporary living and classic charm. Boasting impeccable design and meticulous attention to detail, this residence offers a lifestyle of comfort and sophistication.



Hainault Street, London, SE9
 Approximate Area = 750 sq ft / 69.6 sq m (excludes store)
 For information only - Not to scale



Energy Performance Certificate
 This plan produced in accordance with RICS Property Measurement Standards incorporating International Property Measurement Standards (IPMS) (London). © Cockburn 2023. Prepared for Cockburn Estate Agents. 1021 10/2023



Cockburn EA

352 Footscray Road,
 London, SE9 2EB

t: 020 8859 8590