



FOR SALE

£300,000

3 Towpath Mead Ironbridge Lane, Milton,
Southsea, PO4 8ND.

Tenure: Freehold

ESTATE  AGENTS

LAWSON ROSE

PROPERTY DESCRIPTION

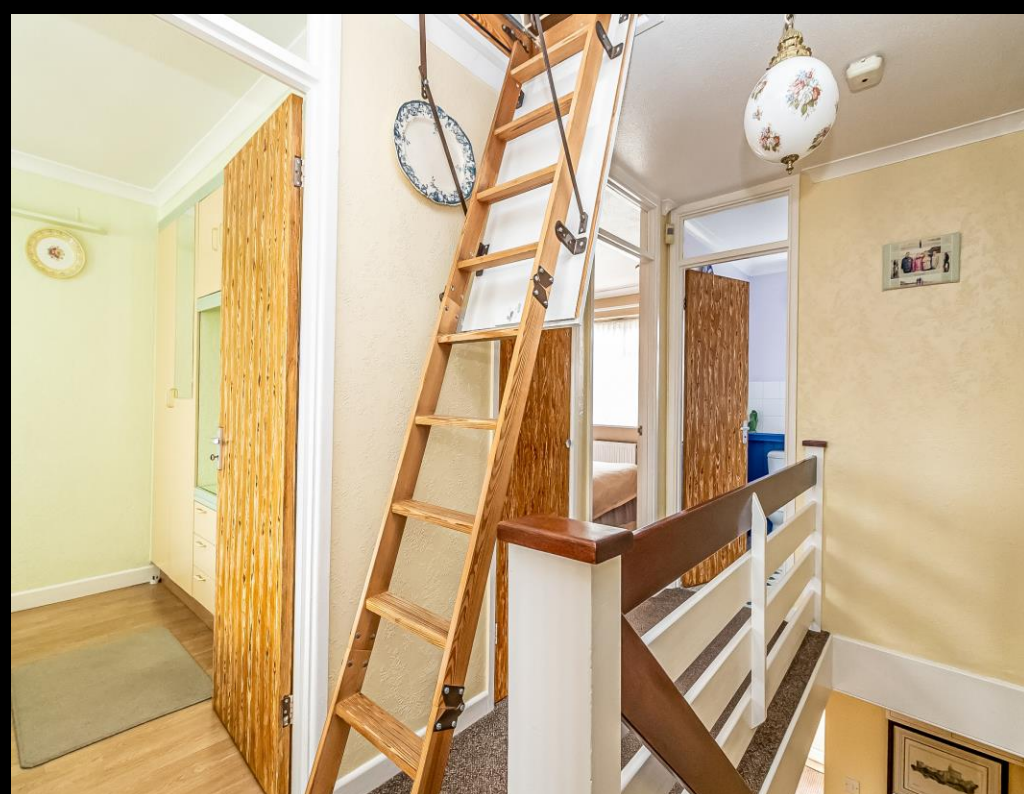
This beautifully maintained three-bedroom terraced property is tucked away in a quiet, sought-after residential pocket of Milton and benefits from both an off-road parking space and a garage with power, lighting and an electric door. Lovingly cared for by the current owners since new, the home offers a modern fitted kitchen/breakfast room, a convenient downstairs W.C., and a generous open-plan living area. Bi-folding doors seamlessly extend the living space into a spacious rear conservatory, which enjoys views over the well-kept, low-maintenance garden. Upstairs, you'll find three bedrooms – two of which include built-in wardrobes – along with a contemporary shower room. The home also features a versatile loft space with Velux windows, currently used as a hobby room, adding further flexibility to the layout. With direct access to the garage and garden, this is a superb opportunity for a range of buyers. We highly recommend an internal viewing to fully appreciate everything this much-loved home has to offer. For further details or to arrange a viewing, please contact the Lawson Rose sales office today.

Material Information:

- Construction: Brick Built
- Electricity Supply: Alternating Current
- Heating: Gas Central Heating
- Water Supply: Mains Water Supply
- Sewage: Mains Sewage
- Broadband: Standard, Superfast Fibre and Gfast Fibre are available.
- Mobile: Ofcom Checker shows EE, Three, O2 and Vodafone all have voice and data availability in this area.
- Parking: Garage & Off Road Parking
- Council Tax: Portsmouth City Council – Band C
- Flood Risk – Low Risk (Stated on the Gov.uk portal)

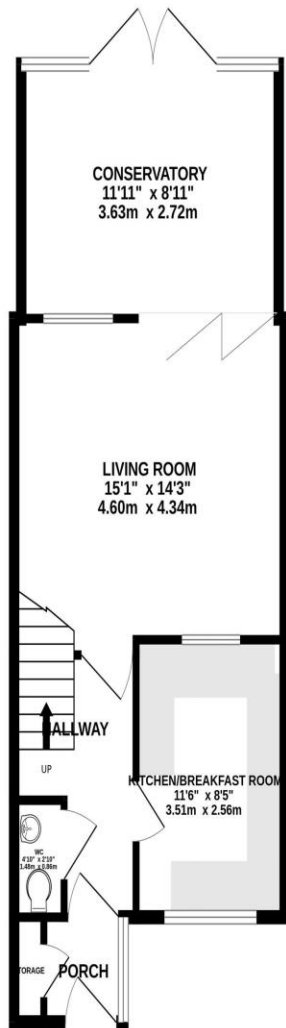


02392 367 779 - contactus@lawsonrose.com
131 Winter Road, Southsea, P04 8DS

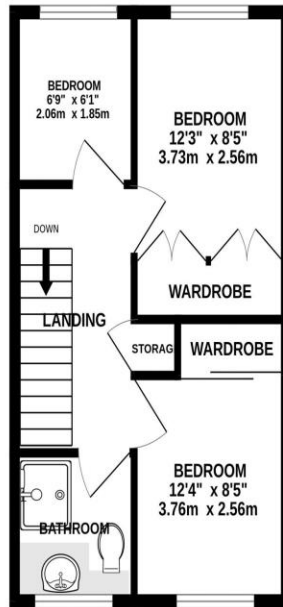




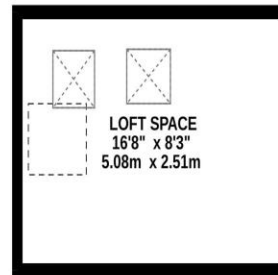
GROUND FLOOR



1ST FLOOR



2ND FLOOR



Please note that none of the services or appliances have been tested by Lawson Rose Estate Agents.