



FOR SALE

£240,000

Flat 6 Nirvana Mansions, 14 Eastern Villas Road,
Southsea, PO4 0SU.

Tenure: Share of Freehold

ESTATE  AGENTS

LAWSON ROSE

PROPERTY DESCRIPTION

Nestled in a prime location just moments from the seafront and promenade, this charming first-floor apartment offers the perfect blend of contemporary style and original character. Situated in the sought-after Nirvana Mansions on Eastern Villas Road, this spacious two-bedroom home is set back from the street and boasts an elegant communal garden upon entrance. The apartment features two generously-sized double bedrooms, a well-appointed kitchen, and a stylish bathroom with a separate utility space. The bright and airy living room provides an inviting space to relax and entertain, making it the perfect place to unwind after a day by the sea. The property is further enhanced by double glazing, gas central heating, and ample storage options including communal bike and bin storage. Offered with the added benefits of a share of the freehold and no forward chain, this is an excellent opportunity to secure a delightful property in one of Southsea's most desirable locations. For more information or to arrange an internal viewing, please contact the Lawson Rose sales office today.

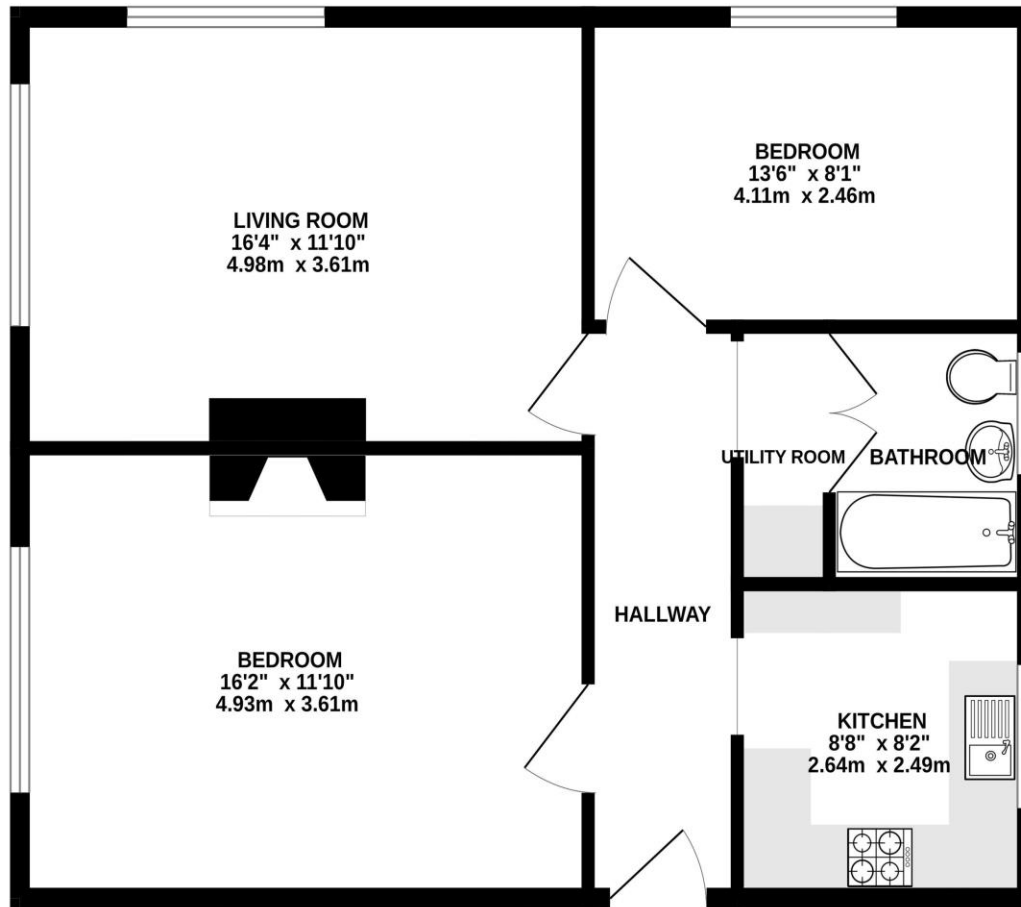
Material Information:

- Construction: Brick Built
- Electricity Supply: Alternating Current
- Heating: Gas Central Heating
- Water Supply: Mains Water Supply
- Sewage: Mains Sewage
- Broadband: Standard, Superfast Fibre and Gfast Fibre are available.
- Mobile: Ofcom Checker shows EE, Three, O2 and Vodafone all have voice and data availability in this area.
- Permit Parking: 1st permit is £30, 2nd permit is £120 and 3rd permit (where available) is £300.
- Council Tax: Portsmouth City Council – Band B
- Flood Risk – Low Risk (Stated on the Gov.uk portal)
- Tenure – Share Of The Freehold –
- Term: TBC
- Management Company: COSGROVES
- Service Charge: £800 P/A
- Ground Rent: N/A
- Lease Restriction: A copy of the lease is available upon request.





FLAT 6



Whilst every attempt has been made to ensure the accuracy of the floorplan contained here, measurements of doors, windows, rooms and any other items are approximate and no responsibility is taken for any error, omission or mis-statement. This plan is for illustrative purposes only and should be used as such by any prospective purchaser. The services, systems and appliances shown have not been tested and no guarantee as to their operability or efficiency can be given.
Made with Metropix ©2025

Please note that none of the services or appliances have been tested by Lawson Rose Estate Agents.