



ESTATE AGENTS
**LAWSON
ROSE**

FOR SALE
Offers in the Region Of £325,000
17 Winter Road,
Southsea, PO4 9BT.

ESTATE  AGENTS

**LAWSON
ROSE**

Offers in the Region Of £325,000

17 Winter Road,
Southsea

This double bay & forecourt property on the popular Winter Road in Southsea is being offered with no forward chain! Well presented throughout and an ideal for a first time or family home, the accommodation comprises a lounge with large bay window, fitted kitchen, downstairs W/C and an extended dining room with double doors overlooking the enclosed west facing rear garden. The first floor then provides three good sized double bedrooms, access to a partly boarded loft with Velux window, plus a modern fitted bathroom suite. Additionally the property is double glazed and gas centrally heated throughout and therefore we highly recommend an internal viewing to appreciate all that's on offer. Please contact the office for all enquires on 02292367779.

Services

Electricity, gas, mains water and mains drainage are available. Please note that none of the services or appliances have been tested by Lawson Rose.

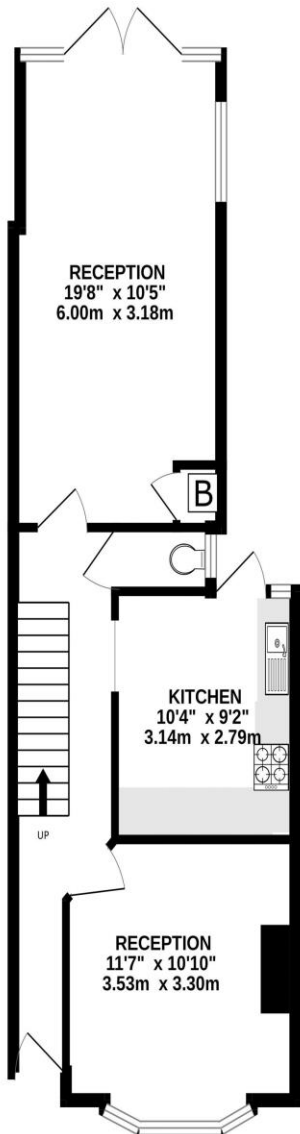
Council Tax - Band B



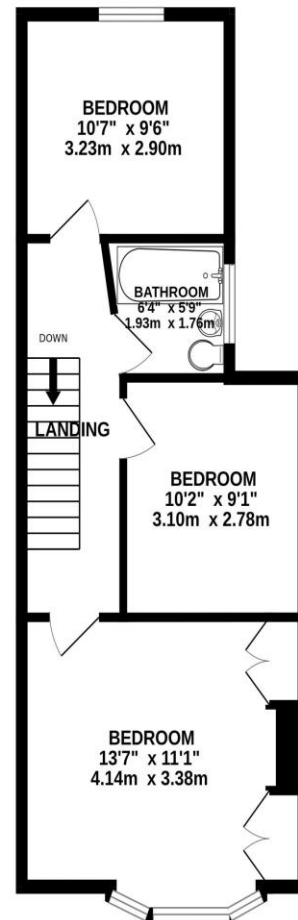
02392 367 779 - contactus@lawsonrose.com

131 Winter Road, Southsea, P04 8DS

GROUND FLOOR



1ST FLOOR



Whilst every attempt has been made to ensure the accuracy of the floorplan contained here, measurements of doors, windows, rooms and any other items are approximate and no responsibility is taken for any error, omission or mis-statement. This plan is for illustrative purposes only and should be used as such by any prospective purchaser. The services, systems and appliances shown have not been tested and no guarantee as to their operability or efficiency can be given.
Made with Metropix ©2023



