



ESTATE AGENTS
**LAWSON
ROSE**

FOR SALE
£450,000
14 The Haven,
Southsea, PO4 8YQ.

ESTATE  AGENTS
**LAWSON
ROSE**

£450,000

14 The Haven, Southsea

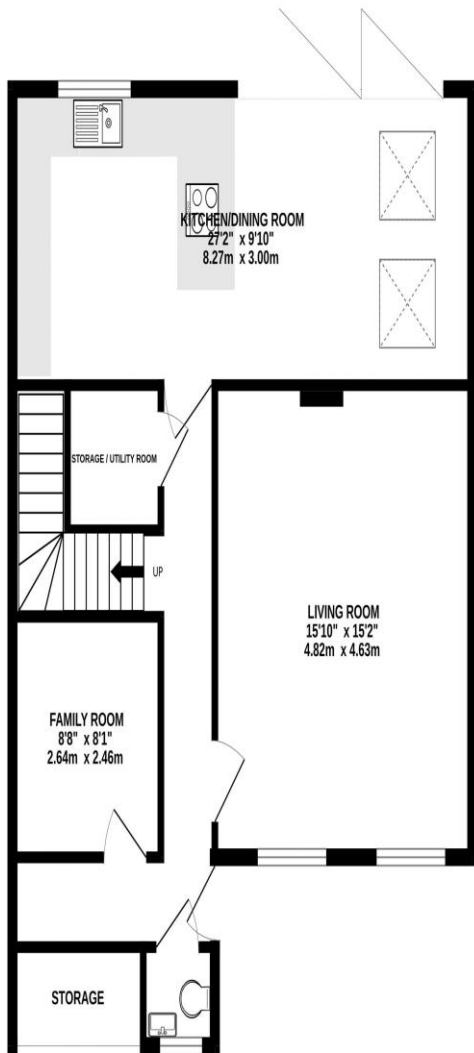
This stunning end of terrace property has been extended, modernised and re-designed by the current homeowners providing a stand out, contemporary and stylish family home in a highly requested pocket of Portsmouth. Situated in The Haven, Milton, the attention to detail is evident upon entering the property, with a downstairs cloakroom, family room and plenty of space for coats and shoes upon entry. The home has an extended, bright and airy living room, with a stunning open plan kitchen/ dining area, complete with sky slights and bi-folding doors opening into the rear garden. There is underfloor heating throughout the ground floor with room zone control. The first floor then provides four good sized bedrooms, a sizable airing cupboard, plus the modern fitted family bathroom suite. Additional benefits include double glazing and gas central heating, the garden has a south westerly orientation, plus there is rear pedestrian access. Parking is no issue as the home has a separate garage in block with a parking space in front, plus a separate driveway at the property front with an installed EV charger. Given all that's offer, we highly recommend an internal viewing to appreciate the finish and all that's been achieved here, so for further information or to arrange an internal viewing, please contact the Lawson Rose sales office today.

Services

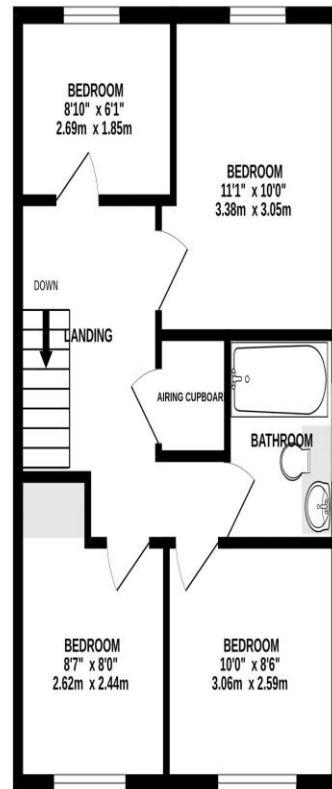
Electricity, gas, mains water and mains drainage are available. Please note that none of the services or appliances have been tested by Lawson Rose.

Council Tax - Band D

GROUND FLOOR



1ST FLOOR



Score	Energy rating	Current	Potential
92+	A		
81-91	B		84 B
69-80	C		
55-68	D	67 D	
39-54	E		
21-38	F		
1-20	G		

Whilst every attempt has been made to ensure the accuracy of the floorplan contained here, measurements of doors, windows, rooms and any other items are approximate and no responsibility is taken for any error, omission or mis-statement. This plan is for illustrative purposes only and should be used as such by any prospective purchaser. The services, systems and appliances shown have not been tested and no guarantee as to their operability or efficiency can be given.

Made with Metropix ©2023



