

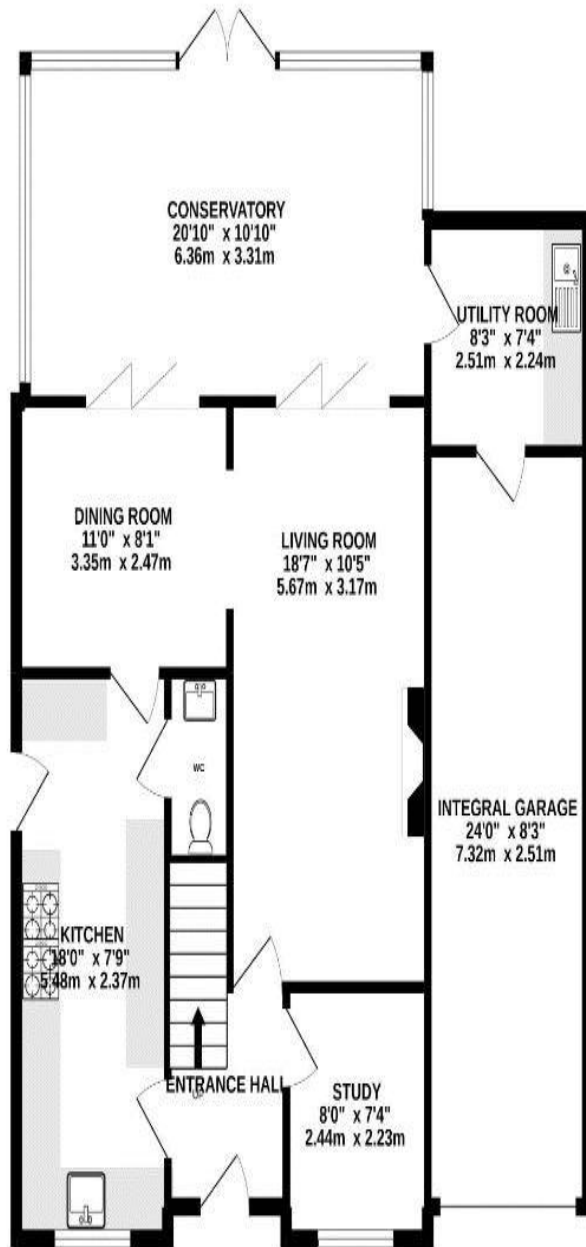


FOR SALE
£640,000
41 Milebush Road,
Southsea, PO4 8NF.

ESTATE  AGENTS

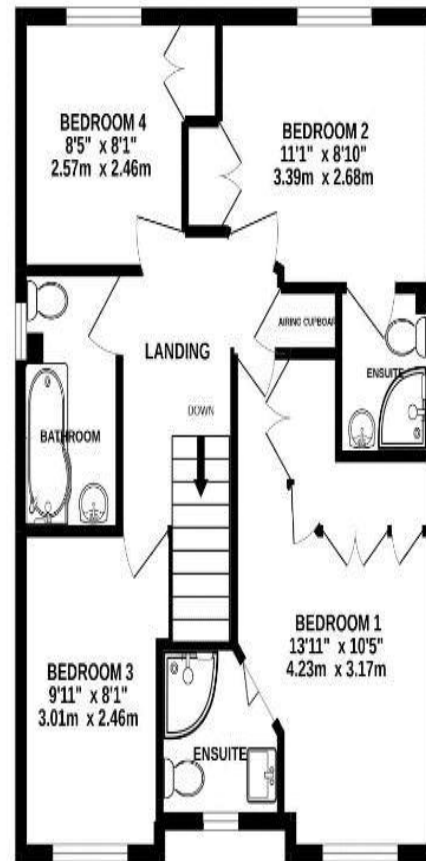
**LAWSON
ROSE**

GROUND FLOOR
1035 sq.ft. (96.1 sq.m.) approx.



TOTAL FLOOR AREA : 1590 sq.ft. (147.7 sq.m.) approx.

Whilst every attempt has been made to ensure the accuracy of the floorplan contained here, measurements of doors, windows, rooms and any other items are approximate and no responsibility is taken for any error, omission or mis-statement. This plan is for illustrative purposes only and should be used as such by any prospective purchaser. The services, systems and appliances shown have not been tested and no guarantee as to their operability or efficiency can be given.
Made with Metropix ©2022



Nestled in a peaceful neighbourhood, is this immaculately presented detached residence in the requested Milebush Close, Milton. Upon entering, off the inviting hallway, you're greeted by a spacious, bright and airy living space that reflects the essence of modern design. The open layout seamlessly connects the living area, dining space, and the modern kitchen, creating an ideal setting for both relaxation and entertainment. There is a separate study and downstairs W.C, and one of the standout features of this home is the expansive conservatory that bathes the living space in natural light. This versatile space could serve as a second lounge or a playroom, allowing you to tailor it to your specific needs. Moving on is a separate utility area, and a sizeable garage, all complemented by a brilliant landscaped south facing garden, providing the perfect place to relax and unwind. The first floor then provides the family bathroom suite and the four great sized double bedrooms, the majority of which have built in wardrobes and two of the which have stylish En-suite shower rooms. Additionally the home is double glaze and gas centrally heated, there is side pedestrian access to the garden and a driveway to the front of the property, offering off road parking for multiple vehicles! Given the properties location and all it has to offer, we highly recommend an internal viewing to appreciate all that's on offer, so for further information or to enquire on viewing



