

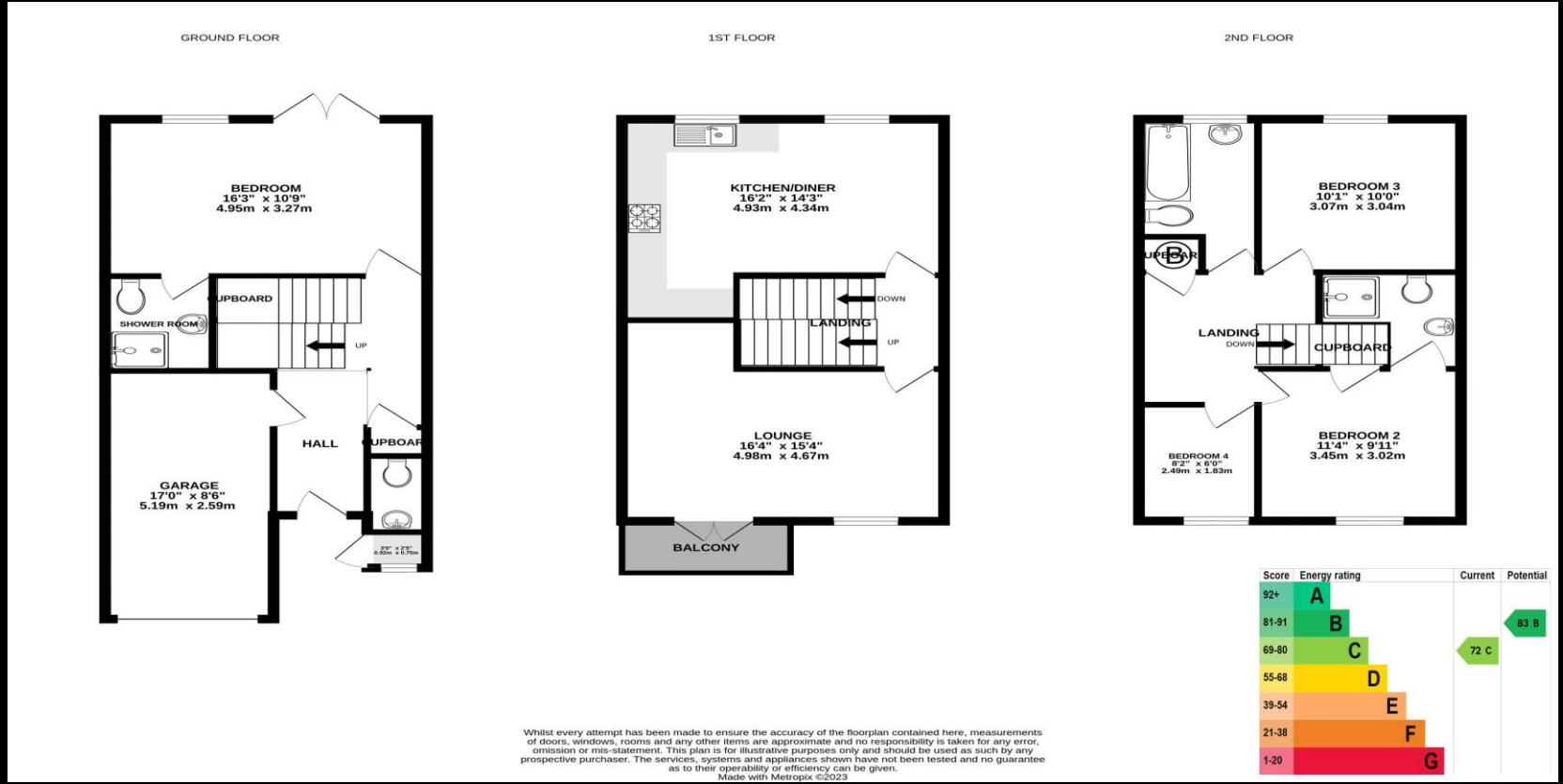


ESTATE AGENTS
**LAWSON
ROSE**

FOR SALE
Guide Price £650,000
4 Marine Court,
Southsea, PO4 9QU.

ESTATE  AGENTS

**LAWSON
ROSE**



This four-bedroom townhouse is nestled in a prime location, perfectly situated on Southsea seafront, right next to the beach and picturesque promenade. This brilliant family residence offers a unique blend of coastal charm and contemporary luxury, making it an idyllic haven for beach lovers and those seeking a refined coastal lifestyle. Situated on the highly requested Marine Court and with accommodation set over three floors, the property boasts a modern and elegantly designed kitchen/ dining room, offering the perfect space for gatherings with family and friends. There is a spacious living room, thoughtfully designed to be both inviting and comfortable, providing ample space for relaxation and entertainment, all while taking advantage of the captivating views through large windows & the brilliant private balcony. The impressive residence houses four generously sized bedrooms, Two of the bedrooms come with en-suite shower rooms, ensuring privacy and convenience for the occupants, plus a separate bathroom and a handy downstairs W.C. For added practicality there is an integral garage, offering secure parking and additional storage space. The rear garden offers an inviting outdoor oasis, perfect for enjoying al fresco dining & gardening. Living in this townhouse, you'll be surrounded by the best of both worlds - the tranquillity of the seafront and the vibrancy of Southsea's thriving community. The nearby amenities, trendy cafes and restaurant ensure that you'll never be far from the action, while the coastal landscape and sea breeze provide a peaceful retreat from the bustling city life. In summary, this four-bedroom townhouse is a rare gem in a coveted location, offering a splendid combination of modern living, coastal charm, and sea views. Embrace the opportunity to experience the epitome of seaside luxury and make this dream coastal residence your new home.



