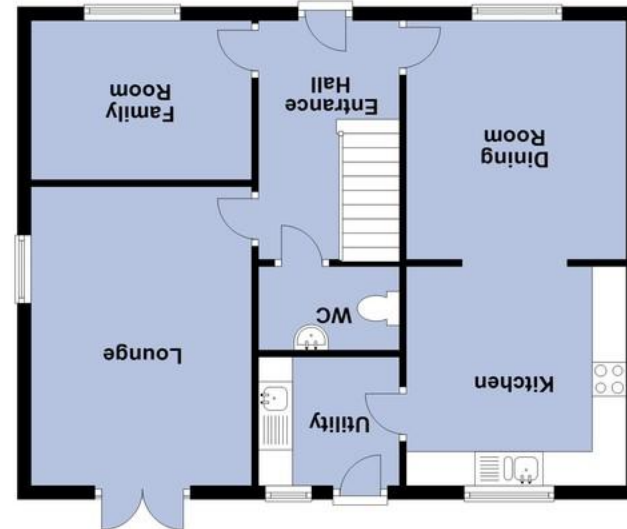
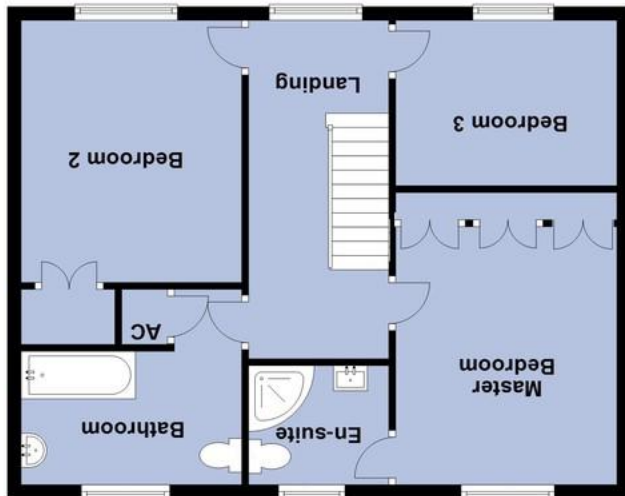
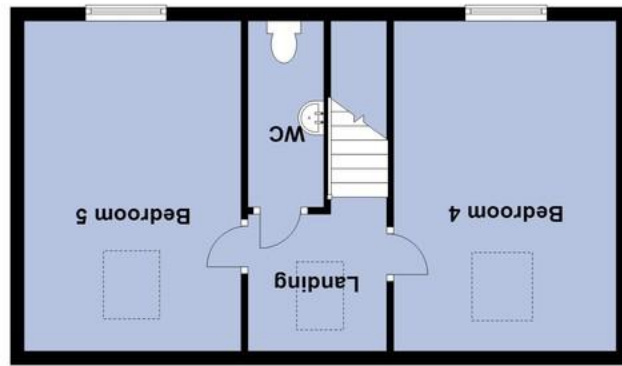


Agents Note: Whilst every care has been taken to prepare these sales particulars, they are for guidance purposes only. All measurements are approximate and are for general guidance purposes only and whilst every care has been taken to ensure their accuracy, they should not be relied upon and potential buyers are advised to recheck the measurements.

Plans are for representational purposes only  
Plan produced using Planlup.



## Hive End Court, Chatteris, Cambs., PE16 6HZ

Detached House - 5 Double Bedrooms - 3 Reception Rooms - Kitchen & Utility - En Suite, Bathroom & 2 Separate WC's - Enclosed Rear Garden - Driveway & Garage - Call To View (01354 696700) - Open Weekdays Till 8pm - Saturday till 5pm - Sunday till 4pm - PLEASE VIEW VIRTUAL VIEWING BEFORE BOOKING A VIEWING IN PERSON.

**£315,000**





Property Description

Ground Floor

Entrance Hall  
Double glazed entrance door, radiator, stairs to the first floor.

Dining Room  
3.51m (11'6") x 3.24m (10'8") Double glazed window to front, radiator, open plan to:

Kitchen 3.23m (10'7") x 3.22m (10'7")  
Fitted with a matching range of base and eye level units with worktop space over, tiled splashbacks, 1+1/2 bowl stainless steel sink, built-in fridge/freezer and dishwasher. There is a built-in double oven, gas hob with extractor hood over, double glazed window to rear, radiator, tiled flooring, spotlight.

Utility 2.07m (6'9") x 1.89m (6'2")  
Fitted with a matching range of base units with worktop space over, tiled splashbacks, stainless steel sink, plumbing for washing machine, space for tumble dryer, double glazed window to rear, radiator, tiled flooring, double glazed door to the rear garden.

WC  
Wash hand basin and low-level WC, tiled splashback, tiled flooring.

Family Room  
3.24m (10'8") x 2.34m (7'8") Double glazed window to front, radiator.

Lounge 4.40m (14'5") x 3.24m (10'8")  
Double glazed window to side, radiator, double glazed double doors to the rear garden.

First Floor

Landing  
Double glazed window to front, radiator, stairs to the first floor.

Master Bedroom  
4.29m (14'1") x 3.25m (10'8") Double glazed window to rear, fitted wardrobes, door to:

En-suite  
Wash hand basin with drawers under, shower enclosure and low-level WC, tiled splashbacks, double glazed window to rear, heated towel rail, spotlights.

Bedroom 2 3.93m (12'11") x 3.24m (10'8")  
Double glazed window to front, radiator.

Bedroom 3 3.24m (10'8") x 2.43m (8')  
Double glazed window to front, radiator.

Bathroom  
Bath with shower over and screen, pedestal wash hand basin and low-level, tiled splashbacks, double glazed window to rear, heated towel rail, tiled flooring, spotlights.

Second Floor

Landing  
Double glazed Velux.

Bedroom 4 4.85m (15'11") x 3.27m (10'9")  
Double glazed window to front, double glazed Velux, radiator.

Bedroom 5 4.85m (15'11") x 3.19m (10'6")  
Double glazed window to front, double glazed Velux, radiator.

WC  
Wash hand basin and low-level WC, tiled splashback, radiator, tiled flooring.

Outside  
There is an enclosed rear garden (approximately 11m x 8 m (size given by vendor)) mainly laid to lawn and patio areas. The driveway leads to the single garage with up and over door.

EPC Rating-C

