



Westbourne Road, Chatteris, Cambs. PE16 6HQ

Generous Corner Plot - Cul De Sac Location - Semi Detached House - 3 Bedrooms - 2 Reception Rooms - Kitchen & Utility - Ground Floor WC - First Floor Wet Room & Separate WC - Enclosed Rear Garden - Extensive Driveway & Garage - Call To View (01354) 696700

£190,000



Ground Floor

Entrance Hall

Radiator and stairs to first floor.

Kitchen

3.38m (11'1") x 2.42m (7'11")

Fitted with a matching range of base and eye level units, electric cooker, 1 ½ bowl sink, space for fridge, coving to ceiling, storage cupboards and double-glazed windows to side.

Lounge

3.86m (12'8") x 3.85m (12'8")

Double glazed window to front, fireplace, radiator and coving to ceiling.

Dining Room

3.38m (11'1") x 3.28m (10'9")

Double glazed window to rear, fireplace, radiator, laminate flooring and coving to ceiling.

Rear Lobby

Window to rear, store cupboard and part glazed door to the rear garden.

Utility

2.38m (7'10") x 2.30m (7'7")

Base units, stainless steel sink, plumbing for washing machine, space for freezer and window to front.

WC

Low level WC and window to side.

First Floor

Landing

Double glazed window to side.

Bedroom 1

3.87m (12'8") x 2.78m (9'1")

Double glazed window to front, fitted wardrobe, radiator and coving to ceiling.

Bedroom 2

3.30m (10'10") x 2.83m (9'2")

Fitted wardrobes, radiator and double-glazed window to rear.

Bedroom 3

2.64m (8'8") x 2.47m (8'1")

Double glazed window to front, radiator and storage cupboard.

Wet Room

Fitted two piece suite comprising vanity wash hand basin, and shower area with electric shower, radiator, vinyl flooring and double glazed window to rear.

WC

Low level WC and double-glazed window to side.

Outside

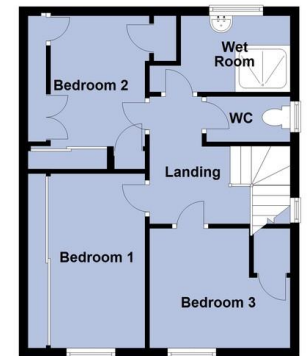
The front garden is mainly laid to lawn with mature shrubs. A footway and gravelled driveway lead to the garage beyond the front gates. The enclosed rear garden is mainly laid to lawn with trees such as apple trees, nectarine, pear, cherry, plum and nut trees.

EPC - TBC

Ground Floor



First Floor



Plans are for representational purposes only
Plan produced using PlanUp.



Agents Note: Whilst every care has been taken to prepare these sales particulars, they are for guidance purposes only. All measurements are approximate and are for general guidance purposes only and whilst every care has been taken to ensure their accuracy, they should not be relied upon and potential buyers are advised to recheck the measurements.