



## Whitemill Road, Chatteris, PE16 6PG

Extended End Terrace House - 2 Bedrooms - 2 Reception Rooms - Kitchen - Garden - Allocated Parking - No Upward Chain - Call To View (01354 696700) - Open weekdays till 8pm - Saturday till 5pm - Sunday till 4pm

**£160,000**



**Ground Floor**

**Entrance Hall**

Double glazed entrance door, double glazed window to side, radiator.

**Lounge**

**4.50m (14'9") x 4.32m (14'2")**  
Double glazed bay window to front, radiator, laminate flooring, coving to ceiling, stairs to first floor.

**Dining Room**

**2.44m (8') x 2.37m (7'9")**  
Radiator, laminate flooring.

**Kitchen 2.44m (8') x 1.83m (6')**

Fitted with a matching range of base units with worktop space over, space for fridge/freezer, built-in eye level oven, hob with extractor hood over, tiled flooring, coving to ceiling, open plan:

**Kitchen Area**

**3.11m (10'2") x 2.03m (6'8")**  
Double glazed window to rear, fitted with a matching range of base and eye level units with worktop space over, sink, tiled splashbacks, space for dishwasher and washing machine, tiled flooring, double glazed door to side.

**Family Room**

**3.11m (10'2") x 2.37m (7'9")**  
Double glazed double doors to garden, radiator, laminate flooring, coving to ceiling.

**First Floor**

**Bedroom 1**

**3.53m (11'7") x 2.92m (9'7")**  
Double glazed window to front, fitted wardrobes, radiator.

**Bedroom 2**

**3.07m (10'1") max x 2.04m (6'8")**  
Double glazed window to rear, radiator.

**Bathroom**

Frosted double glazed window to rear, corner bath with shower with over, pedestal wash hand basin, partly tiled walls, low-level WC, heated towel rail, tiled flooring.

**Outside**

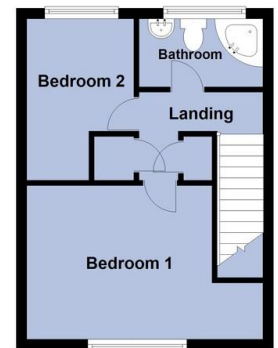
Low maintenance garden to the front of the property which is mainly laid to gravel and extends to the side of the property (Allocated Parking). Gate to the side allows access to the rear garden, which is mainly paved. Fence and garden sheds to the rear of the property.

**EPC RATING - TBC**

**Ground Floor**



**First Floor**



Plans are for representational purposes only  
Plan produced using PlanUp.



Agents Note: Whilst every care has been taken to prepare these sales particulars, they are for guidance purposes only. All measurements are approximate and are for general guidance purposes only and whilst every care has been taken to ensure their accuracy, they should not be relied upon and potential buyers are advised to recheck the measurements.