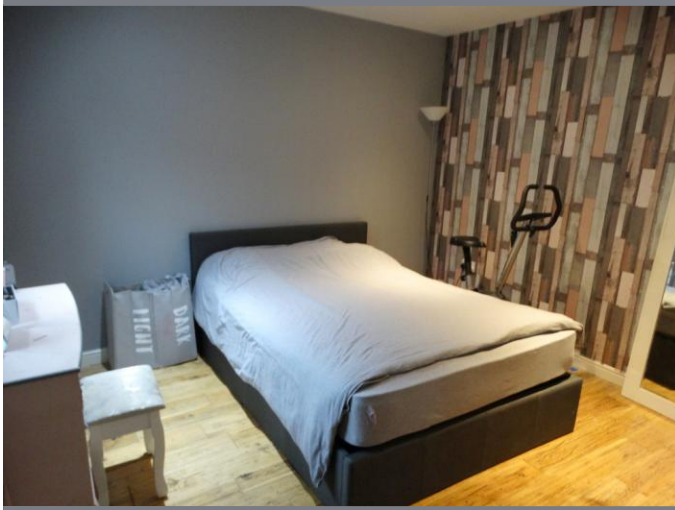




Victoria Street, Chatteris, Cambs, PE16 6AP

End Terrace House - 2 Bedrooms - Kitchen/Lounge - Bathroom & Downstairs WC -
Parking & Open Fronted Barn - Garden - No Up Ward Chain -

£200,000



Ground Floor

Entrance Hall

Double glazed entrance door and window to front, radiator, wooden flooring, stairs to the first floor.

Kitchen/Lounge

6.81m (22'4") x 3.44m (11'3")
Fitted with a matching range of base and eye level units with worktop space over, tiled splashbacks, 1+1/2 bowl stainless steel sink, built-in fridge and dishwasher, plumbing for washing machine. There is a built-in oven, gas hob with extractor hood over, double glazed window to front, radiator, tiled flooring in kitchen area and wooden flooring in the lounge area, vaulted ceiling with feature beams, double glazed double doors to the front.

Bedroom 1

3.75m (12'4") max x 3.43m (11'3")
Double glazed window to front, built-in wardrobes, built in wardrobes, radiator, wooden flooring, spotlights.

WC

Wash hand basin and low-level WC, wooden flooring.

Open Fronted Barn

12.60m (41'4") x 3.50m (11'6")

First Floor

Landing

Double glazed window to front, radiator.

Bedroom 2

3.46m (11'4") x 2.24m (7'4")
Double glazed window to front, radiator, coving to ceiling.

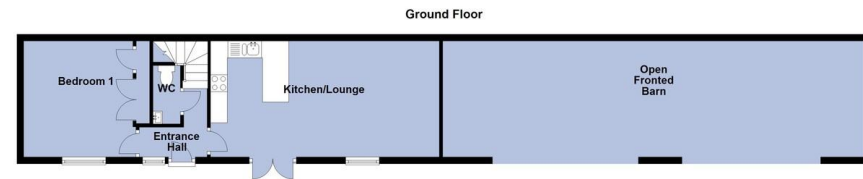
Bathroom

Panelled bath with shower attachment, pedestal wash hand basin and low-level WC, tiled walls, heated towel rail, tiled flooring, spotlights.

Outside

There is a parking area, lawn and an open fronted Barn.

Epc Rating-TBC



Plans are for representational purposes only
Plan produced using Floorplan



Agents Note: Whilst every care has been taken to prepare these sales particulars, they are for guidance purposes only. All measurements are approximate and for general guidance purposes only and whilst every care has been taken to ensure their accuracy, they should not be relied upon and potential buyers are advised to recheck the measurements