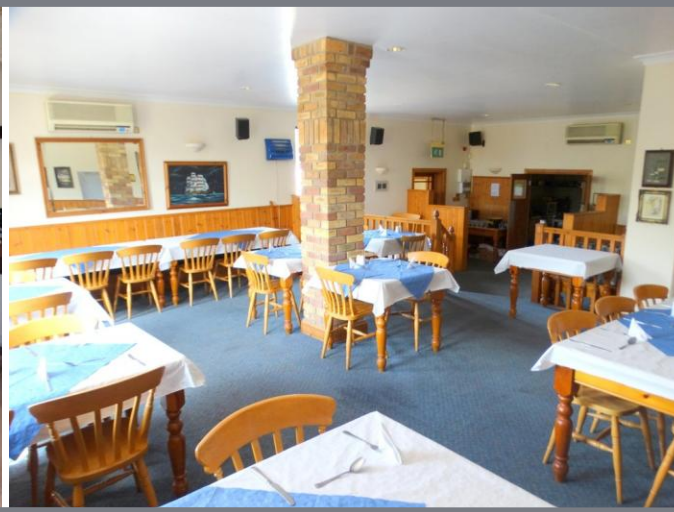




Herne Road, Ramsey, Huntingdon, PE26 2TB

Public House - Village Location - 2 Separate Restaurant Areas - 2 Bars - 2 Bar Lounges - Games Room - Function Room - 2 Commercial Kitchens - Office/ Bedroom - Parking - Call To View (01354 696700)

£450,000



Ground Floor
Entrance
Double glazed entrance door and window to front, doors to Gents WC and Ladies WC and doors to:

Bar Lounge Area 1
5.45m (17'11") x 5.22m (17'2")
Three double glazed windows to front, wood burning stove and bar.

Bar Lounge Area 2
4.20m (13'9") x 3.70m (12'2")
Two double glazed windows to front.

Games Room
5.47m (17'11") x 4.30m (14'1")
Double glazed window to side, built in storage cupboard, door to side and door Gents WC.

Restaurant Area 1
5.70m (18'8") x 4.60m (15'1")
Double glazed window to side and bar, door cellar, door to bottle store

and door to:
Restaurant Area 2
10.94m (35'11") x 7.90m (25'11")
Double glazed windows to side to rear, double door, door to the Rear porch and Disabled WC

Commercial Kitchen
5.80m (19') x 3.80m (12'6")

4 Store Rooms

Utility

Staff WC

First Floor
Double doors to the rear lead to a stairs to the first floor and door to:

Function Room
14.9m (48'11") x 8.0m (26'3")
Double glazed windows to rear, dance floor, bar area, Gents and Ladies WC, Store and door to:

Commercial Kitchen
4.80m (15'9") x 4.70m (15'5")
Double glazed window to side and door to:

Hallway
Radiator, Airing cupboard, door to bathroom and door to:

Office/ Bedroom (unmeasured)
with double glazed window to front, door.

Outside
Customer parking area to the front.

EPC RATING - C

