



Plot 69 Chester, London Road, Chatteris, PE16 6LT

New Build - Detached House - 4 Bedrooms - Kitchen/Diner & Lounge - Ground Floor WC - First Floor Bathroom & En Suite - Driveway & Garage - No Upward Chain - Call To Enquiry - (01354) 696700

£390,000



Featuring a spacious 18ft long open plan kitchen with breakfast bar and French doors onto the garden. A bright and airy lounge, cloakroom and extra storage space complete the ground floor.

Upstairs you'll find your main bedroom with an en suite, a second double bedroom, two single bedrooms or versatile space and a family bathroom.

Kitchen / Dining
18'1" x 13'6"

Lounge
10'8" x 16'5"

WC
2'10" x 7'1"

Bedroom 1
9'0" x 13'9"

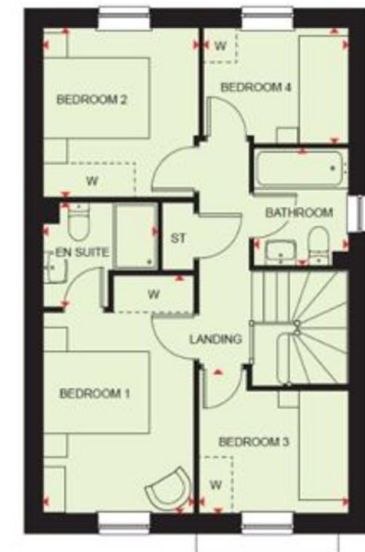
En Suite
6'0" x 6'6"

Bedroom 2
9'3" x 9'9"

Bedroom 3
8'9" x 8'3"

Bedroom 4
8'6" x 6'9"

Bathroom
5'6" x 6'8"



Call to arrange a viewing **01354 696700**

T Payne & Co
SALES & LETTINGS



Agents Notes: Whilst every care has been taken to prepare these sales particulars, they are for guidance purposes only. All measurements are approximate and for general guidance purposes only and whilst every care has been taken to ensure their accuracy, they should not be relied upon and potential buyers are advised to recheck the measurements.