



Juniper Close, Doddington, March, PE15 0WQ

Built in 2021 - Detached Bungalow - 2 Bedrooms - Lounge/Diner - Kitchen - Ensuite To Master & Bathroom - Enclosed Rear Garden - Detached Garage - Off Road Parking - Call To View (01354) 696700

£270,000



Ground Floor

Porch
Brick built porch with door leading to;

Entrance Hall
Two built in storage cupboards, single radiator and fitted carpet.

Kitchen
3.45m (11'3") max x 2.71m (8'8")
Fitted with a matching range of base and eye level units with worktop space over, stainless steel sink with tiled splashbacks, integrated fridge/freezer and washing machine, built-in electric double oven, built-in electric hob with extractor hood over, double glazed window to front and tiled flooring.

Lounge
4.79m (15'7") x 3.28m (10'7")
Single radiator, fitted carpet and double doors leading to the garden.

Bedroom 1
3.94m (12'9") x 3.30m (10'8")
Double glazed window to side, built in double wardrobes, single radiator and fitted carpet.

En-suite
Fitted with three-piece suite comprising wash hand basin, shower cubicle and low-level WC, tiled splashbacks, double glazed window to rear, heated towel rail and vinyl flooring.

Bedroom 2
2.72m (8'9") x 2.72m (8'9")
Double glazed window to front, double glazed window to side, single radiator and fitted carpet.

Bathroom
Fitted with three piece suite comprising panelled bath, wash hand basin, WC, tiled splashbacks, double glazed window to front, heated towel rail and vinyl flooring.

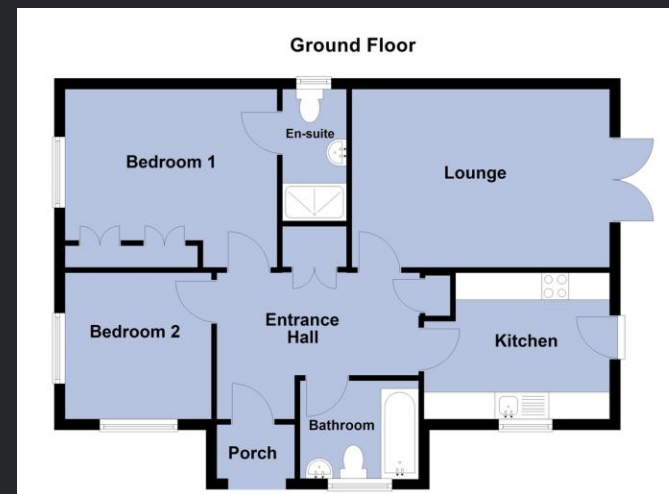
Outside

To the front of the property is a wraparound front garden which is laid to lawn with planted shrubs and plants.

To the rear of the property is a detached garage which is connected with power and electric and installed with and up and over door. There is parking in front of the garage.

A rear gate allows access to an enclosed rear garden which is set to seed and planted with conifer trees.

EPC Rating: B



Call to arrange a viewing **01354 696700**

T Payne & Co
SALES & LETTINGS



Agents Notes: Whilst every care has been taken to prepare these sales particulars, they are for guidance purposes only. All measurements are approximate and for general guidance purposes only and whilst every care has been taken to ensure their accuracy, they should not be relied upon and potential buyers are advised to recheck the measurements.