



Lindsells Walk, Chatteris, PE16 6PW

Close To Town Location - First Floor Flat - 1 Bedroom - Lounge & Kitchen - Bathroom - Allocated Parking -
Available Soon - Deposit £750 - Council Tax Band A - Call To View (01354) 696700

£650 pcm



Entrance Hall

Single radiator and door to;

Lounge 3.89m (12'7") x 2.00m (6'5")

Window to front, window to side and single radiator.

Kitchen 3.73m (12'2") x 1.92m (6'2")

Fitted with a matching range of base and eye level units with worktop space over, stainless steel sink with tiled splashbacks, built-in fridge and freezer, plumbing for washing machine, fitted electric oven, built-in gas hob, window to side and tiled flooring.

Bedroom 1

2.92m (9'5") x 2.43m (7'9")

Window to front and single radiator.

Bathroom

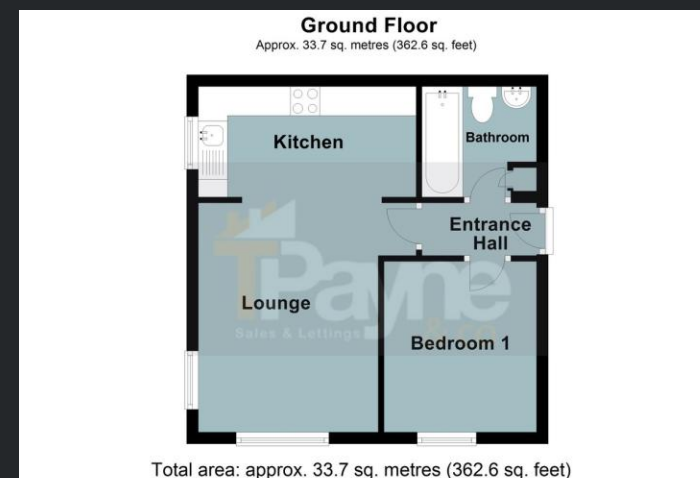
Fitted with three piece suite comprising panelled bath, wash

hand basin and low-level WC, tiled splashbacks, storage cupboard, single radiator and tiled flooring.

Outside

Allocated parking.

EPC Rating - C



Agents Notes: Whilst every care has been taken to prepare these sales particulars, they are for guidance purposes only. All measurements are approximate and for general guidance purposes only and whilst every care has been taken to ensure their accuracy, they should not be relied upon and potential buyers are advised to recheck the measurements.

Call to arrange a viewing **01354 696700**

T Payne & Co
SALES & LETTINGS

