



Huntingdon Road, Chatteris, PE16 6ED

Well Presented - First Floor Flat - 1 Bedroom - Open Plan Kitchen/Breakfast Room & Lounge - Bathroom - Allocated Parking - Deposit £865.38 - Available June - Call To View (01354) 696700

£750 pcm



Ground Floor

built in wardrobe, radiator and coving to ceiling.

Entrance Hall

Outside

There is allocated parking to rear.

Entrance door and radiator.

Kitchen/Breakfast Room, Lounge

5.43m (17'10") x 3.81m (12'6")
Fitted with a matching range of base and eye level units with worktop space over, electric hob with extractor hood over, built-in oven, stainless steel sink, plumbing for washing machine and dishwasher, space for fridge/freezer, two double glazed windows to rear, two radiators and coving to ceiling.

Directions

Turning right out of our High Street office, follow the High Street, High Street then becomes Park Street. Turn right onto Huntingdon Road, follow Huntingdon Road and the property can be found on the left-hand side.

EPC - C

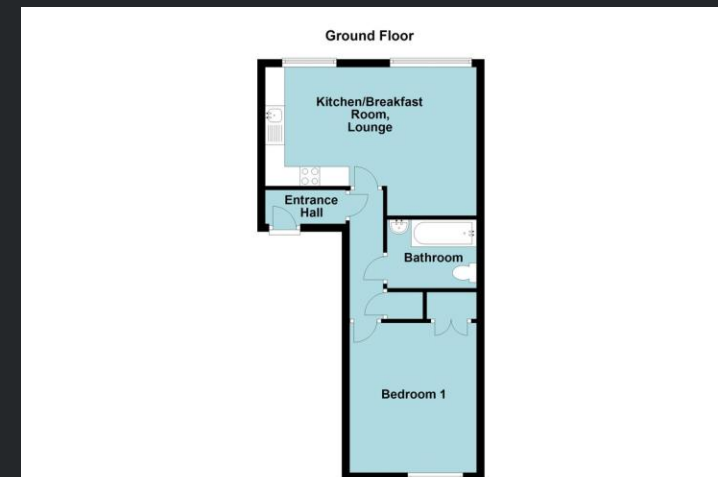
Bathroom

Fitted with three-piece suite comprising bath with shower attachment over, pedestal wash hand basin and low-level WC, tiled surround, radiator and coving to ceiling.

Bedroom 1 3.84m (12'7") x 3.26m

(10'8")

Double glazed window to front,



Call to arrange a viewing **01354 696700**

T Payne & Co
SALES & LETTINGS



Agents Notes: Whilst every care has been taken to prepare these sales particulars, they are for guidance purposes only. All measurements are approximate and for general guidance purposes only and whilst every care has been taken to ensure their accuracy, they should not be relied upon and potential buyers are advised to recheck the measurements.