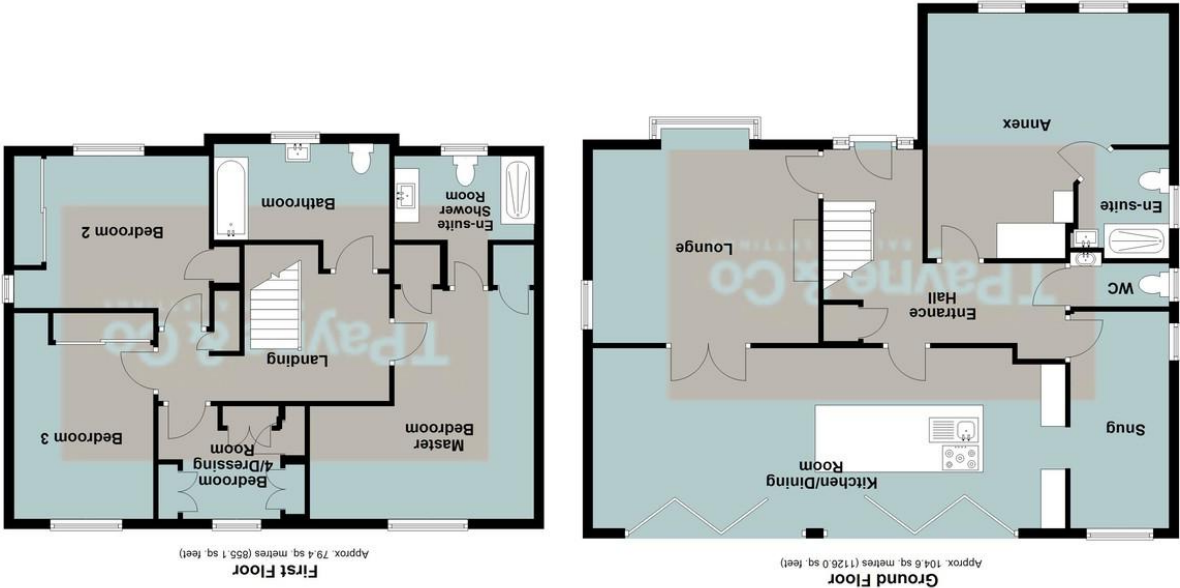


Total area: approx. 184.1 sq. metres (1981.1 sq. feet)



Ground floor

First floor

TPayne & Co  
SALES & LETTINGS

Chatteris Office  
6 High Street, Chatteris PE16 6BE

Wisbech Office

The Boatouse, Harbour Square, Wisbech PE13 3BH

01354 696700 info@tpayneandco.co.uk

www.tpayneandco.co.uk

TPayne & Co  
SALES & LETTINGS

01354 696700 info@tpayneandco.co.uk



## Honey Lane, Chatteris, Cambs, PE16 6LG

Stunning Detached House - 4 Bedrooms & Annex – Kitchen/Dining Room & Lounge - Family Bathroom, Two En-Suites & Ground Floor WC - Front & Rear Gardens - Driveway for Multiple Vehicles – Viewing Recommended - Call To View (01354) 696700

£599,500





Ground Floor

between indoor and outdoor spaces.

Entrance Hall  
Double glazed entrance door with two double glazed windows to front, stairs to first floor, understairs storage cupboard, tiled flooring, under floor heating and doors to:

Lounge 4.54m (15') x 3.95m (13')  
Double glazed box window to front, double glazed window to side, coal effect gas fire in fireplace, radiator and glazed double doors to:

Kitchen/Dining Room  
9.51m (31'2") x 3.34m (10' 9:)  
Fitted with a matching range of base and eye level units, matching island unit with cupboards and drawers under, with silestone granite worktop space over, stainless steel sink, built-in integrated fridge/freezer and dishwasher, built-in eye level electric fan assisted double oven, built-in five ring gas hob with extractor over, tiled flooring with under floor heating, with double bi-fold doors to enclosed rear garden creating openness and expansiveness, blurring the lines

Snug/Office  
Double glazed window to rear, double glazed window to side, radiator, tiled flooring with under floor heating.

WC  
Double glazed window to side, fitted with two piece suite comprising, freestanding wash hand basin with fully tiled walls and low-level WC, tiled flooring with under floor heating and extractor fan.

Annex  
4.99m (16'5") x 4.93m (16'2")  
Fitted with a matching range of base and eye level units with worktop space over, integrated fridge, washing machine and tumble dryer, two double glazed windows to front, radiator, part tiled flooring and door to:

En-suite  
Fitted with three piece suite comprising wash hand basin, shower enclosure and low-level WC, fully tiled walls, double glazed window to side,

radiator, tiled flooring, with under floor heating and extractor fan.

First Floor

Landing

Master Bedroom  
4.64m (15'2") x 3.52m (11'6") max  
Double glazed window to rear, two walk-in storage cupboards, radiator, part panelled walls solid oak flooring, door to:

En-suite Shower Room  
Fitted with three piece suite comprising large shower enclosure, wash hand basin with fully tiled walls and low-level WC, double glazed window to front, heated towel rail, tiled flooring with under floor heating.

Bedroom 2  
3.98m (13') x 3.10m (10'2") max  
Double glazed window to side, double glazed window to front, fitted with a range of wardrobes with sliding doors, part panelled walls, built-in storage

cupboard which currently has dressing table with shelving, radiator and laminate flooring.

Bedroom 3  
4.20m (13'9") x 2.85m (9'4")  
Double glazed window to rear, fitted with a range of wardrobes with sliding doors, part panelled walls, laminate flooring and radiator.

Bedroom 4/Dressing Room  
Double glazed window to rear, fitted with a range of wardrobes with hanging space and shelving, laminate flooring and radiator.

Bathroom  
Fitted with three piece suite comprising bath with separate shower over and glass screen, wash hand basin with storage under and fully tiled walls, WC with hidden cistern, heated towel rail and mirror, extractor fan, double glazed window to front, tiled flooring with under floor heating and extractor fan.

Outside  
Ideally situated on a private road this property has a driveway to the front with ample parking for several vehicles with a lawned garden. A side gate gives access to the enclosed rear garden which is ideal for family life. A designated undercover space for al fresco dining overlooks a lawn with planted borders with shrubs that give a tropical feel. Seating areas on the spacious patio ideal for sitting round the fire pit for warmth and ambiance during cooler evenings. A timber outbuilding houses a sauna and bar area.

EPC Rating: TBC



**T Payne & Co**  
SALES & LETTINGS



**T Payne & Co**  
SALES & LETTINGS