



The Russets, Upwell, Wisbech, Cambs, PE14 9AJ

Village Location - Mid Terraced House - 1 Bedroom - Open Plan Kitchen & Living Area - Bathroom - Enclosed Rear Garden - Driveway - No Upward Chain - Call To Arrange - (01354) 696700

£120,000



Ground Floor

Open Plan Kitchen & Living Area 6.25m (20'6") max x 3.83m (12'7") max

Double glazed entrance door, double glazed window to front, electric storage heater, stairs to first floor, double glazed double doors to enclosed rear garden.

Open plan kitchen area fitted with a matching range of base and eye level units with worktop space over, stainless steel sink, plumbing for washing machine, space for fridge, built-in electric fan assisted oven, built-in four ring electric hob with extractor hood over.

First Floor

Landing Airing cupboard, storage cupboard, stairs to ground floor and doors to:-

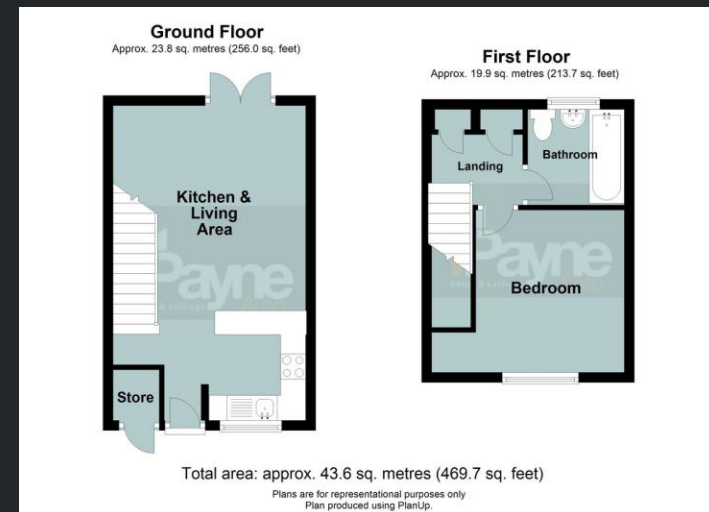
Bedroom 3.83m (12'7") x 3.15m (10'4") Double glazed window to front and electric storage heater and hanging space.

Bathroom Fitted with three piece suite comprising panelled bath with electric shower over and low-level WC, part tiled walls, heated towel rail, extractor fan and double glazed window to rear.

Outside

There is off road parking to the front of the property and a walk-in store. A decked veranda overlooks the enclosed rear garden which is mainly laid to lawn with pathway leading to a timber shed and raised bed.

EPC Rating: D



Call to arrange a viewing **01354 696700** **T Payne & Co**
SALES & LETTINGS

Agents Notes: Whilst every care has been taken to prepare these sales particulars, they are for guidance purposes only. All measurements are approximate and for general guidance purposes only and whilst every care has been taken to ensure their accuracy, they should not be relied upon and potential buyers are advised to recheck the measurements.