



High Street, Chatteris, Cambs, PE16 6NN

Grade II Listed - Central Location - Detached Cottage - Two Double Bedrooms - Open Plan Kitchen, Diner & Lounge
- Bathroom - Deposit £865.38 - Council Tax Band B - Available August

£750 pcm



Ground Floor

Kitchen Area
3.71m (12'2") x 2.39m (7'10")
Fitted with a matching range of base and eye level units with worktop space over, breakfast bar, stainless steel sink, plumbing for washing machine, space for fridge and freezer, electric point for cooker, hardwood window to side, single radiator and tiled flooring.

Dining Area
Hardwood window to side, open fire fireplace with tiled surround and single radiator.

Lounge Area
3.81m (12'6") x 3.59m (11'9")
Hardwood window to front, hardwood window to side, under-stairs storage cupboard, single radiator, stairs to first floor, door to side.

First Floor

Landing
Skylight, sloping ceiling, radiator and doors to:

Bedroom 1
3.81m (12'9") x 2.77m (9'1")
Hardwood window to front, sloping ceilings and single radiator.

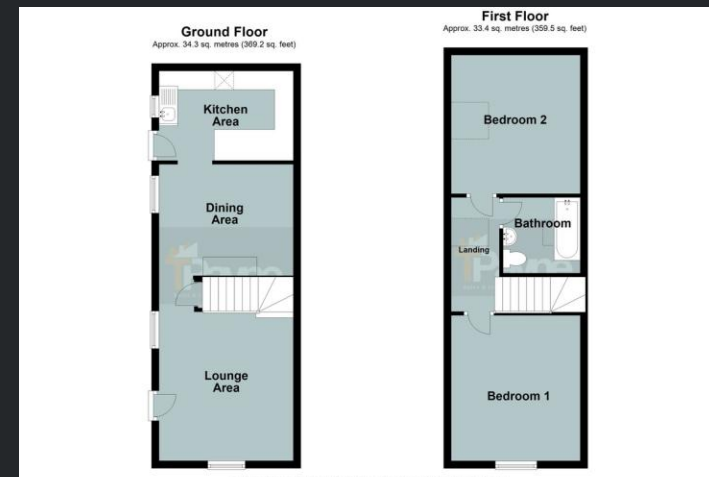
Bedroom 2
3.70m (12'2") x 2.98m (9'9")
Hardwood window to side, sloping ceilings and single radiator.

Bathroom
Fitted with three piece suite comprising panelled bath, pedestal wash hand basin and low-level WC, part tiled walls, skylight, single radiator and vinyl flooring.

Outside

There is a small area of artificial grass to the side of the property.

EPC Rating: E



Call to arrange a viewing **01354 696700** **T Payne & Co**
SALES & LETTINGS



Agents Notes: Whilst every care has been taken to prepare these sales particulars, they are for guidance purposes only. All measurements are approximate and for general guidance purposes only and whilst every care has been taken to ensure their accuracy, they should not be relied upon and potential buyers are advised to recheck the measurements.