



Fellows Road, Peterborough, Cambs, PE2 8DS

Ground Floor Flat - 2 Bedrooms - Lounge/Dining Room - Kitchen - Bathroom - Allocated Parking - Available End Of May - Deposit £1,038.46 - Council Tax Band A - Call To View (01354) 696700

£900 pcm



Ground Floor

Double glazed window to side and electric heater.

Entrance Hall

Two storage cupboards and electric heater.

Bedroom 2

2.31m (7'5") x 2.21m (7'2")
Double glazed window to side and electric heater.

Lounge/Diner

6.27m (20'5") x 3.60m (11'8") max
Double glazed window to side and electric heater.

Outside

One allocated parking space to the front of the property.

Kitchen

2.64m (8'6") x 2.35m (7'7")
Fitted with a matching base and eye level units with worktop space over, stainless steel sink, integrated fridge/freezer and washing machine, electric cooker, electric hob, double glazed window to side and laminate flooring.

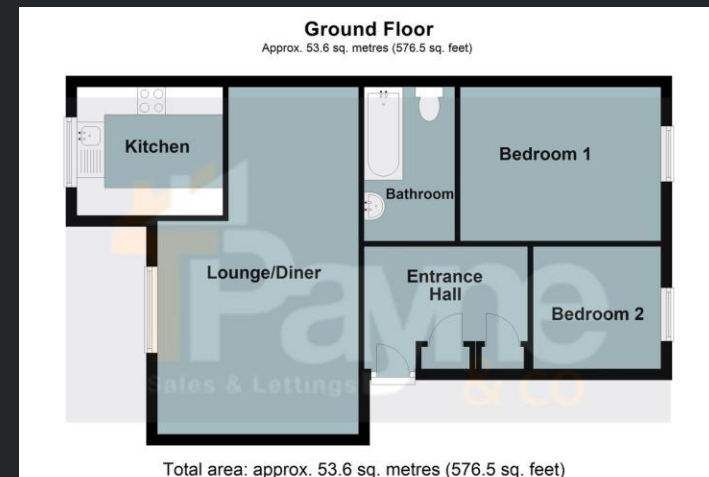
EPC - C

Bathroom

Fitted with three piece suite comprising panelled bath, wash hand basin and low-level WC, tiled splashbacks and laminate flooring.

Bedroom 1

3.63m (11'9") x 2.78m (9'1")



Call to arrange a viewing **01354 696700** **T Payne & Co**
SALES & LETTINGS

Agents Notes: Whilst every care has been taken to prepare these sales particulars, they are for guidance purposes only. All measurements are approximate and for general guidance purposes only and whilst every care has been taken to ensure their accuracy, they should not be relied upon and potential buyers are advised to recheck the measurements.