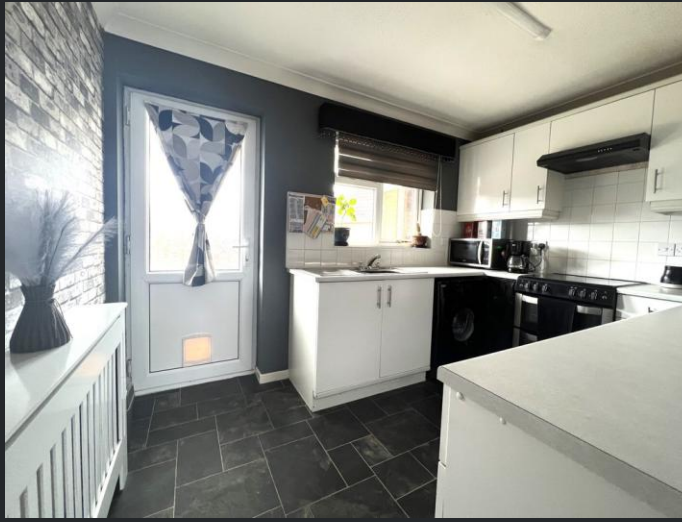




Whitemill Road, Chatteris, PE16 6PG

Popular Town Location - Semi-Detached Bungalow - 2 Bedrooms - Kitchen - Lounge - Bathroom - Enclosed Rear Garden - Garden & Driveway - No Upward Chain - Call To View (01354) 696700

£235,000



Ground Floor

Porch

Part UPVC construction with double glazed windows and door leading to the hallway.

Hallway

Light and airy hallway with 2 built in cupboards one used as an airing cupboard, the second houses a new Valliant boiler. Radiator and laminate flooring.

Max Lounge

4.04m (13'2") x 4.55m (14'9") Double glazed Box window to the front, two radiators and laid to carpet.

Kitchen

3.34m (10'9") x 2.43m (7'9") Fitted with a matching base and eye level units with worktop space over, stainless steel sink with tiled splashbacks, plumbing for washing machine, space for fridge, freezer and cooker, double glazed window to rear, radiator and laminate flooring.

Bedroom 1

3.47m (11'3") x 3.34m (10'9") Double Bedroom fitted with two double wardrobes and low level vanity area, double glazed Window to rear and radiator.

Bedroom 2

2.98m (9'7") x 2.71m (8'8") Double glazed window to front and radiator.

Bathroom

Fitted with three-piece suite comprising panelled bath with separate showerhead over, wash hand basin and low-level WC, tiled splashbacks, double glazed window to rear, heated towel rail, laminate flooring, door to:

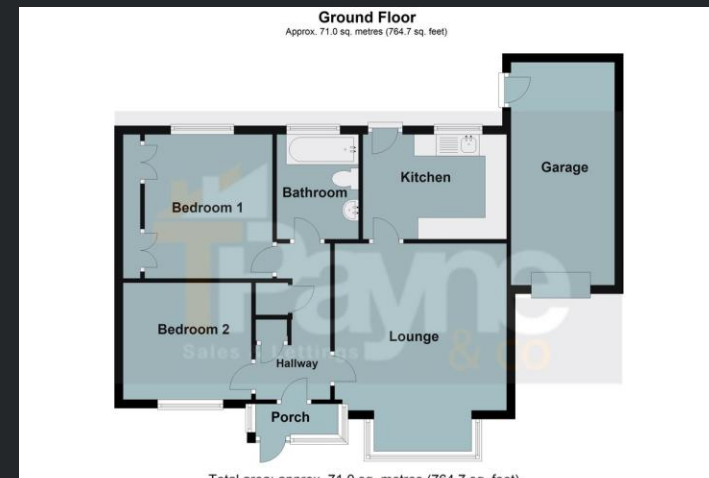
Garage

Attached Brick built garage, connected with power and lighting and a up and over door.

Outside

The property offers a driveway to the side of the property in front of the garage. There is a generous sized low maintenance garden to the rear comprising gravel, small patio area and shrubbed borders. There is also a timber-built summerhouse.

EPC- TBC



Call to arrange a viewing **01354 696700** **T Payne & Co**
SALES & LETTINGS

Agents Notes: Whilst every care has been taken to prepare these sales particulars, they are for guidance purposes only. All measurements are approximate and for general guidance purposes only and whilst every care has been taken to ensure their accuracy, they should not be relied upon and potential buyers are advised to recheck the measurements.