

## Kew Bridge Road, TW8

£4,500 Per calendar month

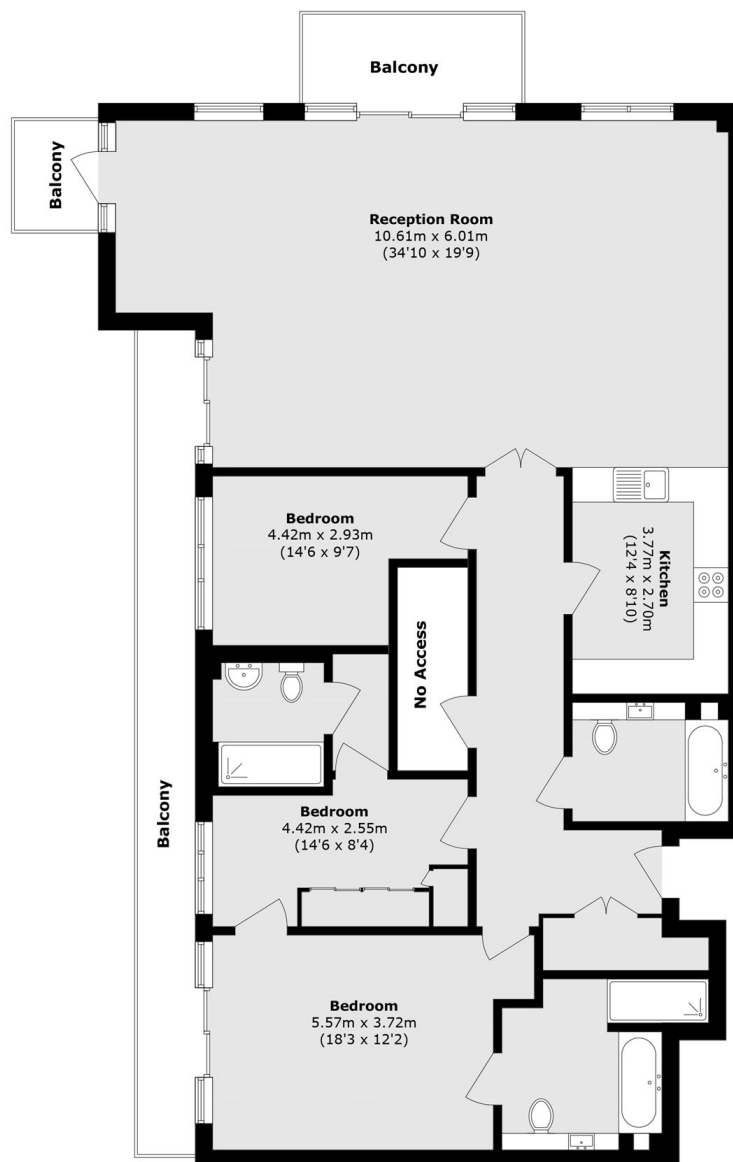
Outstanding three bedroom apartment set within the sought after Kew Bridge Road development. The property comprises large reception room with a wrap around balcony, modern kitchen, three bathrooms, allocated parking and ample storage throughout.

The Kew Bridge development is set on within landscaped gardens on the River Thames close to Kew Bridge and Gunnersbury stations.

### Features

- Three Double Bedrooms
- Allocated Parking
- Large Reception
- Fully Fitted Kitchen
- Three Bathrooms
- Private Balcony

# Kew Bridge Road, Brentford, TW8



Total area (approx.): 155.1 sq. m (1669.4 sq. ft)  
Balcony area (approx.): 22.8 sq. m (254.4 sq. ft)  
(Excluding No Access)

## Dexters

Kew  
2 Mortlake Terrace  
London  
TW9 3DT  
Lettings  
020 8939 6071

Energy Rating: . We aim to make our particulars both accurate and reliable. However they are not guaranteed; nor do they form part of an offer or contract. If you require clarification on any points then please contact us, especially if you're traveling some distance to view. Please note that appliances and heating systems have not been tested and therefore no warranties can be given as to their good working order.

 **RICS** | Regulated  
Estate Agent  
and Letting Agent

[dexters.co.uk](https://www.dexters.co.uk)