



## **Williams Lane, SW14**

**£4,500** Per calendar month

**Dexters**



## Williams Lane, SW14

A well presented four bedroom townhouse situated close to the river Thames offers a open plan living with on street parking.

Arranged over three floors, the ground floor accommodation comprises an open plan kitchen/dining/living room which opens onto the paved garden, and a downstairs W.C which is off the hallway.

On the first floor there are two double bedrooms and modern three piece-bathroom. The second floor offers the principle bedroom with built in wardrobes and a further bathroom & bedroom.

The area is packed with restaurants, wine bars and the Olympic Cinema. There are also two outstanding primary schools close by such as St Mary Magdalene's and Thomson House.

Mortlake station is 0.5 miles away and provides a fast and frequent service to Clapham Junction and Waterloo. There are bus services to Hammersmith and Richmond where there are underground stations. For those who drive there is access via Chiswick Bridge to the M4 (Heathrow) to the West and Central London to the East.

### Features

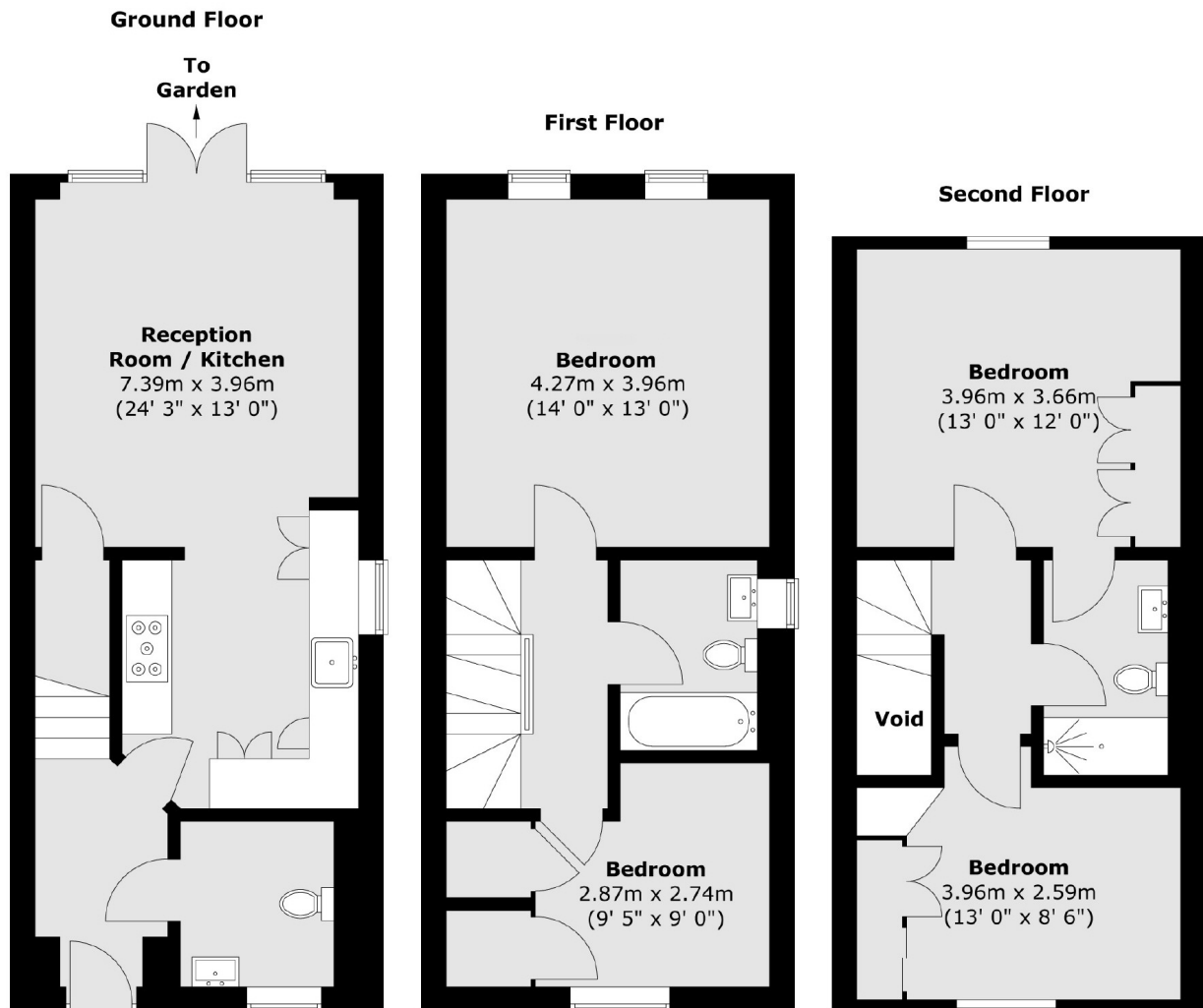
- Four Bedrooms
- Townhouse
- Three Bathrooms
- Open Plan Living
- On Street Parking
- Garden







# Williams Lane, London, SW14



Total area (approx.) : 110.8 sq. m (1193 sq. ft)