



Dovecote Gardens, SW14

£2,250 Per calendar month

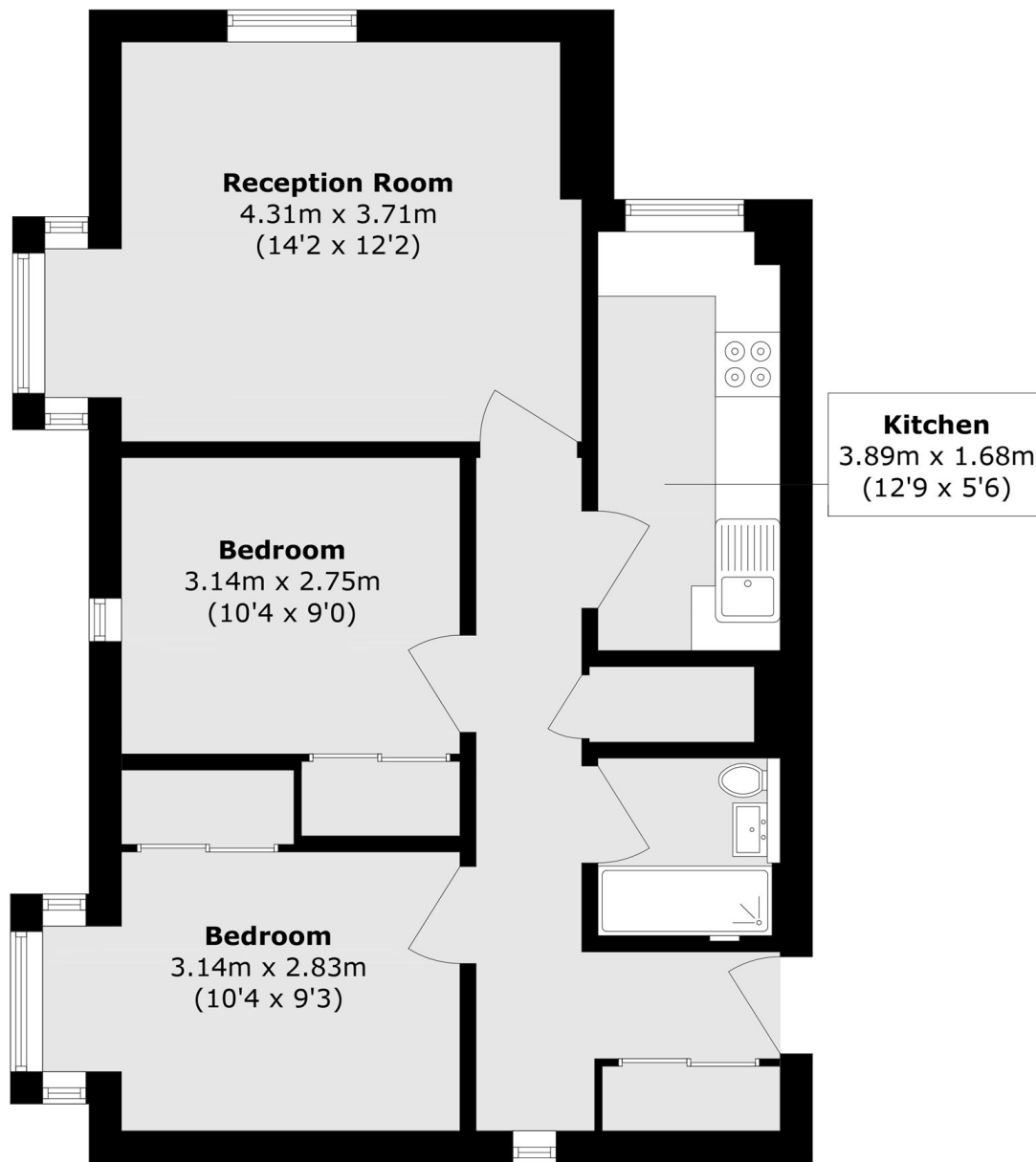
Spacious two bedroom first floor flat with parking, the property comprises large reception, separate kitchen, modern bathroom and ample storage throughout.

The property is located moments to the shops, cafés and restaurants of White Hart Lane or Sheen Lane.

Features

- Two Bedroom
- One Bathroom
- Beautifully Presented
- Allocated Parking
- Modern Kitchen
- Purpose Built Development

Dovecote Gardens, London, SW14



Total area (approx.): 60.4 sq. m (650.1 sq. ft)