



Thompson Avenue, TW9

£5,250 Per calendar month

Dexters



Thompson Avenue, TW9

A beautifully extended and fully renovated 1920s mid-terrace family home, blending timeless character with modern luxury.

This exquisite four-bedroom, two-bathroom residence has been thoughtfully designed to offer generous living space throughout.

The home features a large, separate reception room, perfect for entertaining or relaxing, and an open-plan kitchen/dining area fitted with high-spec, fully integrated appliances all seamlessly flowing out to the large rear garden, ideal for al fresco dining.

For commuters, Richmond, Kew Gardens, and North Sheen stations are all within easy reach, offering swift access to Central London. A range of excellent local bus services further enhances connectivity.

Thompson Avenue is ideally located for Richmond Park and Royal Botanic Gardens Kew. The commuter is equally well catered for with Richmond, Kew Gardens and North Sheen stations close to hand with additional excellent bus services to Central London.

Features

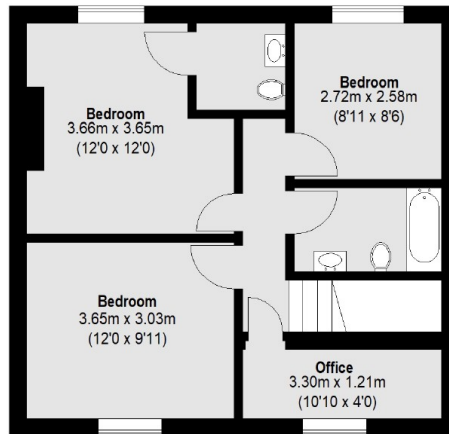
- Four Bedrooms
- Family Home
- Fully Renovated Throughout
- Kitchen/Dining Room
- Separate Office
- Large Rear Garden



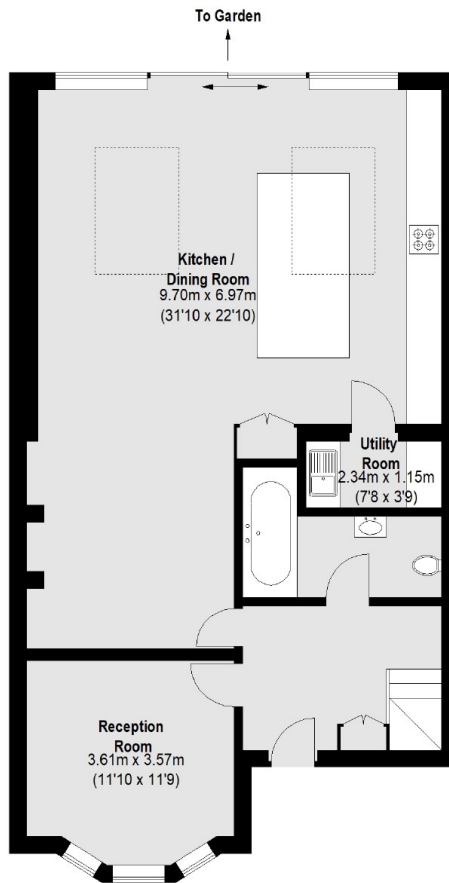




Thompson Avenue, Kew, TW9



First Floor



Ground Floor

Total area (approx.): 137.62 sq. m (1481 Sq. ft)

Dexters

Kew
2 Mortlake Terrace
London
TW9 3DT
Lettings
020 8939 6071

Energy Rating: D. We aim to make our particulars both accurate and reliable. However they are not guaranteed; nor do they form part of an offer or contract. If you require clarification on any points then please contact us, especially if you're traveling some distance to view. Please note that appliances and heating systems have not been tested and therefore no warranties can be given as to their good working order.

 **RICS** | Regulated
Estate Agent
and Letting Agent

[dexters.co.uk](https://www.dexters.co.uk)