



Kew Bridge Road, TW8

£2,645 Per calendar month

Set within the exclusive Kew Bridge Development is this two double bedroom apartment which is finished to a high standard and has two bathrooms, large living space, private balcony, underground parking and concierge service.

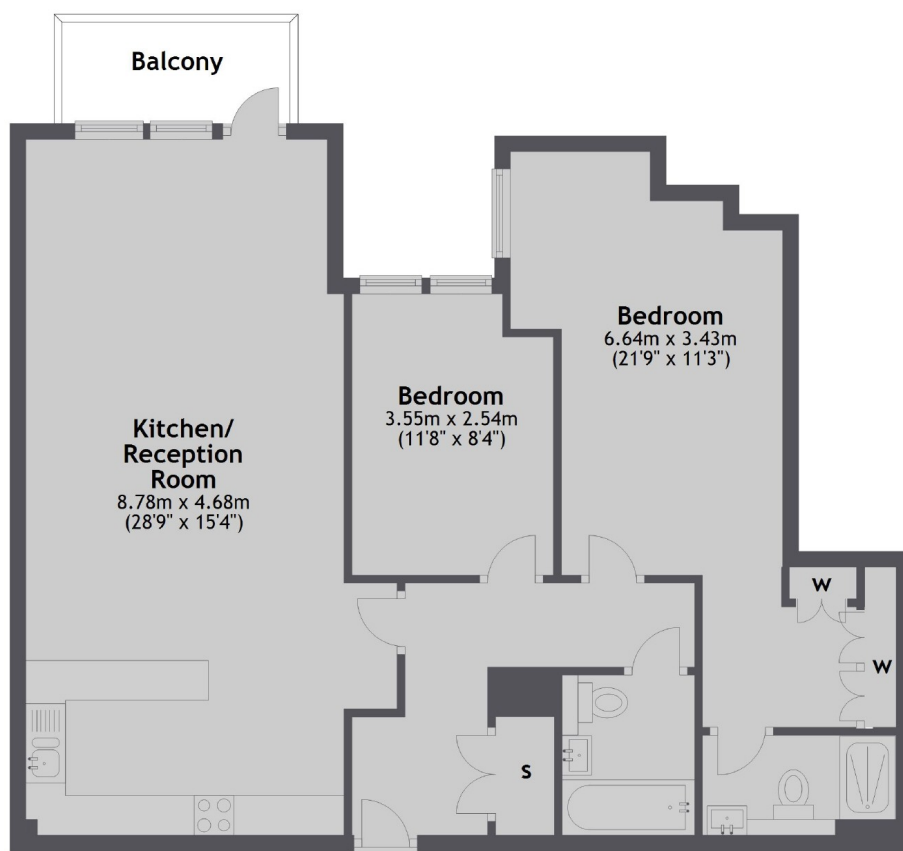
The Kew Bridge development is set on within landscaped gardens on the River Thames close to Kew Bridge and Gunnersbury stations.

Features

- New Build Apartment
- Spacious Reception
- Fitted Kitchen
- Private Balcony
- Two Double Bedrooms
- Two Bathrooms

Kew Bridge Road,
Brentford, TW8

Fourth Floor



Main area: Approx. 82.2 sq. metres (884.5 sq. feet)
Plus balconies, approx. 4.2 sq. metres (45.0 sq. feet)

Dexters

Kew
2 Mortlake Terrace
London
TW9 3DT
Lettings
020 8939 6071

Energy Rating: B. We aim to make our particulars both accurate and reliable. However they are not guaranteed; nor do they form part of an offer or contract. If you require clarification on any points then please contact us, especially if you're traveling some distance to view. Please note that appliances and heating systems have not been tested and therefore no warranties can be given as to their good working order.

RICS | Regulated
Estate Agent
and Letting Agent

dexters.co.uk